

## Product datasheet for **TA347584**

### Tin2 (TINF2) Rabbit Polyclonal Antibody

#### Product data:

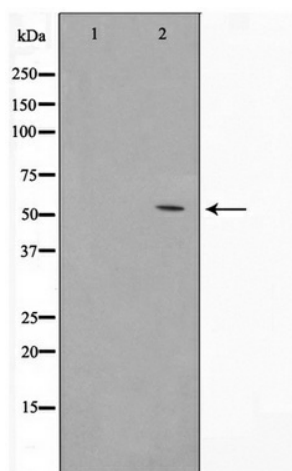
Product Type:	Primary Antibodies
Applications:	WB
Recommended Dilution:	WB: 1:500-1:2000
Reactivity:	Human
Host:	Rabbit
Isotype:	IgG
Clonality:	Polyclonal
Immunogen:	The immunogen for anti-TINF2 Antibody: A synthesized peptide derived from human TINF2
Formulation:	Rabbit IgG in phosphate buffered saline , pH 7.4, 150mM NaCl, 0.02% sodium azide and 50% glycerol. Store at -20?. Stable for 12 months from date of receipt
Concentration:	lot specific
Purification:	Immunogen affinity purified
Conjugation:	Unconjugated
Storage:	Store at -20°C as received.
Stability:	Stable for 12 months from date of receipt.
Predicted Protein Size:	53 kDa
Gene Name:	TERF1 interacting nuclear factor 2
Database Link:	<a href="#">NP_036593</a> <a href="#">Entrez Gene 26277 Human</a> <a href="#">Q9BSI4</a>
Background:	TINF2 Component of the shelterin complex (telosome) that is involved in the regulation of telomere length and protection. Shelterin associates with arrays of double-stranded TTAGGG repeats added by telomerase and protects chromosome ends; without its protective activity, telomeres are no longer hidden from the DNA damage surveillance and chromosome ends are inappropriately processed by DNA repair pathways. Plays a role in shelterin complex assembly. Monomer.
Synonyms:	DKCA3; TIN2



[View online »](#)

Note: TNF2 Antibody detects endogenous levels of TNF2

**Product images:**



Western blot analysis on HuvEc cell lysate using TNF2 Antibody