

## Product datasheet for **TA347582**

### CBX6 Rabbit Polyclonal Antibody

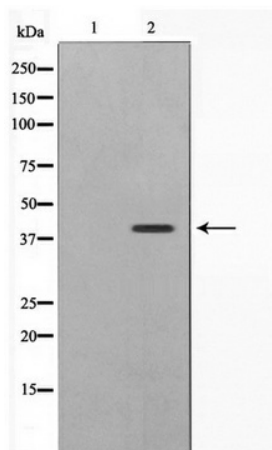
#### Product data:

Product Type:	Primary Antibodies
Applications:	WB
Recommended Dilution:	WB: 1:500-1:2000
Reactivity:	Human, Mouse, Rat
Host:	Rabbit
Isotype:	IgG
Clonality:	Polyclonal
Immunogen:	The immunogen for anti-CBX6 Antibody: A synthesized peptide derived from human CBX6
Formulation:	Rabbit IgG in phosphate buffered saline , pH 7.4, 150mM NaCl, 0.02% sodium azide and 50% glycerol. Store at -20?. Stable for 12 months from date of receipt
Concentration:	lot specific
Purification:	Immunogen affinity purified
Conjugation:	Unconjugated
Storage:	Store at -20°C as received.
Stability:	Stable for 12 months from date of receipt.
Predicted Protein Size:	44 kDa
Gene Name:	chromobox 6
Database Link:	<a href="#">NP_055107</a> <a href="#">Entrez Gene 315136 RatEntrez Gene 494448 MouseEntrez Gene 23466 Human O95503</a>
Background:	CBX6 Involved in maintaining the transcriptionally repressive state of genes. Modifies chromatin, rendering it heritably changed in its expressibility (Probable). Component of the chromatin-associated polycomb complex (PcG). Note: This description may include information from UniProtKB.
Synonyms:	chromobox homolog 6; OTTHUMP00000028667
Note:	CBX6 Antibody detects endogenous levels of CBX6
Protein Families:	Transcription Factors



[View online »](#)

## Product images:



Western blot analysis on 293 cell lysate using  
CBX6 Antibody