

Product datasheet for **TA347580**

CCR7 Rabbit Polyclonal Antibody

Product data:

Product Type:	Primary Antibodies
Applications:	WB
Recommended Dilution:	WB: 1:500-1:2000
Reactivity:	Human
Host:	Rabbit
Isotype:	IgG
Clonality:	Polyclonal
Immunogen:	The immunogen for anti-CCR7 Antibody: A synthesized peptide derived from human CCR7
Formulation:	Rabbit IgG in phosphate buffered saline , pH 7.4, 150mM NaCl, 0.02% sodium azide and 50% glycerol. Store at -20?. Stable for 12 months from date of receipt
Concentration:	lot specific
Purification:	Immunogen affinity purified
Conjugation:	Unconjugated
Storage:	Store at -20°C as received.
Stability:	Stable for 12 months from date of receipt.
Predicted Protein Size:	43 kDa
Gene Name:	C-C motif chemokine receptor 7
Database Link:	NP_001829 Entrez Gene 1236 Human P32248
Background:	The protein encoded by this gene is a member of the G protein-coupled receptor family. This receptor was identified as a gene induced by the Epstein-Barr virus (EBV), and is thought to be a mediator of EBV effects on B lymphocytes. This receptor is expressed in various lymphoid tissues and activates B and T lymphocytes. It has been shown to control the migration of memory T cells to inflamed tissues, as well as stimulate dendritic cell maturation. The chemokine (C-C motif) ligand 19 (CCL19/ECL) has been reported to be a specific ligand of this receptor.
Synonyms:	BLR2; CD197; CDw197; CMKBR7; EB11



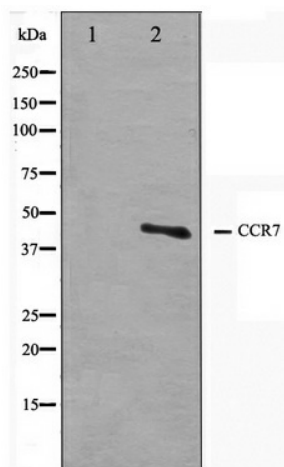
[View online »](#)

Note: CCR7 Antibody detects endogenous levels of CCR7

Protein Families: Druggable Genome, GPCR, Transmembrane

Protein Pathways: Chemokine signaling pathway, Cytokine-cytokine receptor interaction

Product images:



Western blot analysis on COS7 cell lysate using CCR7 Antibody