

Product datasheet for **TA347579**

PTPN22 Rabbit Polyclonal Antibody

Product data:

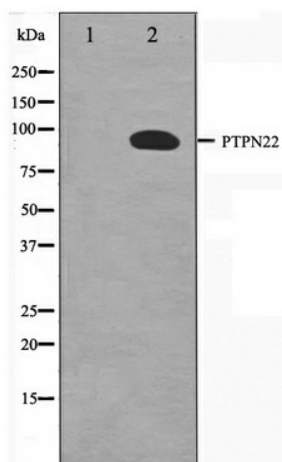
Product Type:	Primary Antibodies
Applications:	WB
Recommended Dilution:	WB: 1:500-1:3000
Reactivity:	Human, Mouse, Rat
Host:	Rabbit
Isotype:	IgG
Clonality:	Polyclonal
Immunogen:	The immunogen for anti-PTPN22 Antibody: A synthesized peptide derived from human PTPN22
Formulation:	Rabbit IgG in phosphate buffered saline , pH 7.4, 150mM NaCl, 0.02% sodium azide and 50% glycerol. Store at -20?. Stable for 12 months from date of receipt
Concentration:	lot specific
Purification:	Affinity-chromatography
Conjugation:	Unconjugated
Storage:	Store at -20°C as received.
Stability:	Stable for 12 months from date of receipt.
Predicted Protein Size:	91 kDa
Gene Name:	protein tyrosine phosphatase, non-receptor type 22
Database Link:	NP_057051 Entrez Gene 19260 Mouse Entrez Gene 295338 Rat Entrez Gene 26191 Human Q9Y2R2
Background:	PTPN22 Seems to act on Cbl. May play a role in regulating the function of Cbl and its associated protein kinases. Acts as negative regulator of T cell receptor (TCR) signaling. Dephosphorylates and inactivates the SRC family kinases. Belongs to the protein-tyrosine phosphatase family.
Synonyms:	LYP; LYP1; LYP2; PEP; PTPN8
Note:	PTPN22 antibody detects endogenous levels of total PTPN22



[View online »](#)

Protein Families: Druggable Genome, Phosphatase

Product images:



Western blot analysis on HeLa cell lysate using PTPN22 Antibody