

Product datasheet for **TA347578**

NOR1 (NR4A3) Rabbit Polyclonal Antibody

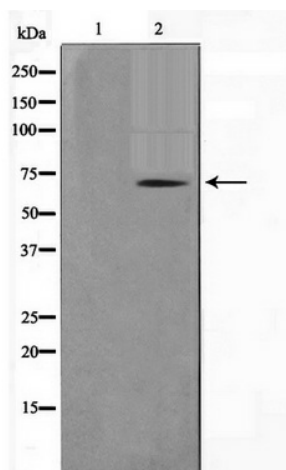
Product data:

Product Type:	Primary Antibodies
Applications:	WB
Recommended Dilution:	WB: 1:500-1:3000
Reactivity:	Human, Mouse, Rat
Host:	Rabbit
Isotype:	IgG
Clonality:	Polyclonal
Immunogen:	The immunogen for anti-NR4A3 Antibody: A synthesized peptide derived from human NR4A3
Formulation:	Rabbit IgG in phosphate buffered saline , pH 7.4, 150mM NaCl, 0.02% sodium azide and 50% glycerol. Store at -20?. Stable for 12 months from date of receipt
Concentration:	lot specific
Purification:	Affinity-chromatography
Conjugation:	Unconjugated
Storage:	Store at -20°C as received.
Stability:	Stable for 12 months from date of receipt.
Predicted Protein Size:	65 kDa
Gene Name:	nuclear receptor subfamily 4 group A member 3
Database Link:	NP_775290 Entrez Gene 18124 Mouse Entrez Gene 58853 Rat Entrez Gene 8013 Human Q92570
Background:	NR4A3 Binds to the B1A response-element. Belongs to the nuclear hormone receptor family. NR4 subfamily. 3 isoforms of the human protein are produced by alternative splicing.
Synonyms:	CHN; CSMF; MINOR; NOR1; TEC
Note:	NR4A3 antibody detects endogenous levels of total NR4A3
Protein Families:	Druggable Genome, Nuclear Hormone Receptor, Transcription Factors



[View online »](#)

Product images:



Western blot analysis on COLO205 cell lysate using NR4A3 Antibody