

Product datasheet for **TA347577**

FYCO1 Rabbit Polyclonal Antibody

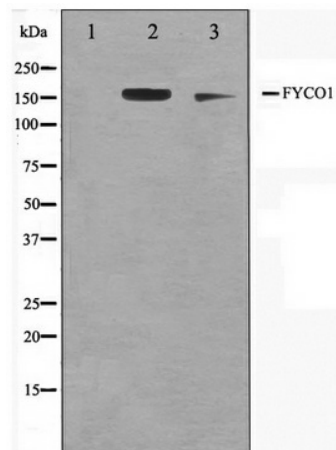
Product data:

Product Type:	Primary Antibodies
Applications:	WB
Recommended Dilution:	WB: 1:500-1:3000
Reactivity:	Human
Host:	Rabbit
Isotype:	IgG
Clonality:	Polyclonal
Immunogen:	The immunogen for anti-FYCO1 Antibody: A synthesized peptide derived from human FYCO1
Formulation:	Rabbit IgG in phosphate buffered saline , pH 7.4, 150mM NaCl, 0.02% sodium azide and 50% glycerol. Store at -20?. Stable for 12 months from date of receipt
Concentration:	lot specific
Purification:	Affinity-chromatography
Conjugation:	Unconjugated
Storage:	Store at -20°C as received.
Stability:	Stable for 12 months from date of receipt.
Predicted Protein Size:	166 kDa
Gene Name:	FYVE and coiled-coil domain containing 1
Database Link:	NP_078789 Entrez Gene 79443 Human Q9BQS8
Background:	FYCO1 3 isoforms of the human protein are produced by alternative splicing.
Synonyms:	CATC2; CTRCT18; RUFY3; ZFYVE7
Note:	FYCO1 antibody detects endogenous levels of total FYCO1



[View online »](#)

Product images:



Western blot analysis on A549 and HuvEc cell lysate using FYCO1 Antibody