

Product datasheet for **TA347576**

MAN1B1 Rabbit Polyclonal Antibody

Product data:

Product Type:	Primary Antibodies
Applications:	WB
Recommended Dilution:	WB: 1:500-1:3000
Reactivity:	Human
Host:	Rabbit
Isotype:	IgG
Clonality:	Polyclonal
Immunogen:	The immunogen for anti-MAN1B1 Antibody: A synthesized peptide derived from human MAN1B1
Formulation:	Rabbit IgG in phosphate buffered saline , pH 7.4, 150mM NaCl, 0.02% sodium azide and 50% glycerol. Store at -20?. Stable for 12 months from date of receipt
Concentration:	lot specific
Purification:	Affinity-chromatography
Conjugation:	Unconjugated
Storage:	Store at -20°C as received.
Stability:	Stable for 12 months from date of receipt.
Predicted Protein Size:	80 kDa
Gene Name:	mannosidase alpha class 1B member 1
Database Link:	NP_057303 Entrez Gene 11253 Human Q9UKM7
Background:	MAN1B1 Involved in glycoprotein quality control targeting of misfolded glycoproteins for degradation. It primarily trims a single alpha-1,2-linked mannose residue from Man(9)GlcNAc(2) to produce Man(8)GlcNAc(2), but at high enzyme concentrations, as found in the ER quality control compartment (ERQC)
Synonyms:	ERMAN1; ERManI; MANA-ER; MRT15
Note:	MAN1B1 antibody detects endogenous levels of total MAN1B1

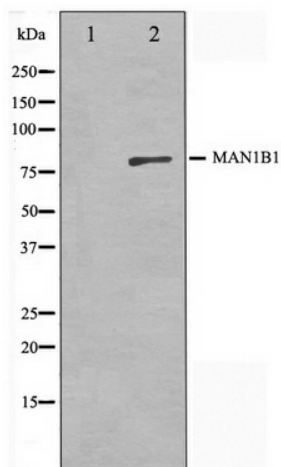


[View online »](#)

Protein Families: Transmembrane

Protein Pathways: Metabolic pathways, N-Glycan biosynthesis

Product images:



Western blot analysis on 3T3 cell lysate using
MAN1B1 Antibody