

## Product datasheet for **TA347575**

### ABCF1 Rabbit Polyclonal Antibody

#### Product data:

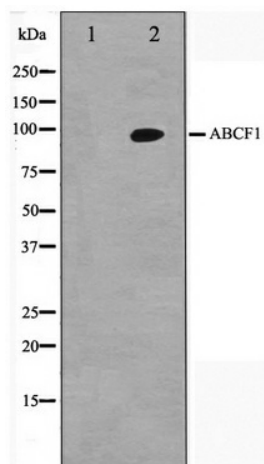
Product Type:	Primary Antibodies
Applications:	WB
Recommended Dilution:	WB: 1:500-1:3000
Reactivity:	Human, Mouse, Rat
Host:	Rabbit
Isotype:	IgG
Clonality:	Polyclonal
Immunogen:	The immunogen for anti-ABCF1 Antibody: A synthesized peptide derived from human ABCF1
Formulation:	Rabbit IgG in phosphate buffered saline , pH 7.4, 150mM NaCl, 0.02% sodium azide and 50% glycerol. Store at -20?. Stable for 12 months from date of receipt
Concentration:	lot specific
Purification:	Affinity-chromatography
Conjugation:	Unconjugated
Storage:	Store at -20°C as received.
Stability:	Stable for 12 months from date of receipt.
Predicted Protein Size:	95 kDa
Gene Name:	ATP binding cassette subfamily F member 1
Database Link:	<a href="#">NP_001020262</a> <a href="#">Entrez Gene 85493 Rat</a> <a href="#">Entrez Gene 224742 Mouse</a> <a href="#">Entrez Gene 23 Human</a> <a href="#">Q8NE71</a>
Background:	ABCF1 May function in mRNA translation. Belongs to the ABC transporter superfamily. ABCF1 family. EF3 subfamily. Induced by TNF (in cultured synoviocytes). Interacts with eukaryotic initiation factor 2 (eIF2). Associates with the ribosomes. 2 isoforms of the human protein are produced by alternative splicing. Note: This description may include information from UniProtKB.
Synonyms:	ABC27; ABC50
Note:	ABCF1 antibody detects endogenous levels of total ABCF1



[View online »](#)

Protein Families: Druggable Genome

### Product images:



Western blot analysis on HeLa cell lysate using ABCF1 Antibody