

Product datasheet for **TA347573**

PARK7 Rabbit Polyclonal Antibody

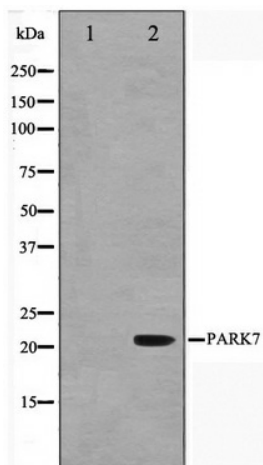
Product data:

Product Type:	Primary Antibodies
Applications:	WB
Recommended Dilution:	WB: 1:500-1:3000
Reactivity:	Human, Mouse, Rat
Host:	Rabbit
Isotype:	IgG
Clonality:	Polyclonal
Immunogen:	The immunogen for anti-PARK7 Antibody: A synthesized peptide derived from human PARK7
Formulation:	Rabbit IgG in phosphate buffered saline , pH 7.4, 150mM NaCl, 0.02% sodium azide and 50% glycerol. Store at -20?. Stable for 12 months from date of receipt
Concentration:	lot specific
Purification:	Affinity-chromatography
Conjugation:	Unconjugated
Storage:	Store at -20°C as received.
Stability:	Stable for 12 months from date of receipt.
Predicted Protein Size:	20 kDa,26 kDa
Gene Name:	Parkinsonism associated deglycase
Database Link:	NP_009193 Entrez Gene 57320 MouseEntrez Gene 117287 RatEntrez Gene 11315 Human Q99497
Background:	DJ-1 associated with autosomal recessive early onset parkinsonism. Involved in the oxidative stress response. Three cysteines in DJ-1 may be oxidized to cysteine sulphonic acid in the cellular response to H ₂ O ₂ . Loss of DJ-1 function may lead to neurodegeneration.
Synonyms:	DJ-1; DJ1; HEL-S-67p
Note:	PARK7 antibody detects endogenous levels of total PARK7
Protein Families:	Druggable Genome, Protease
Protein Pathways:	Parkinson's disease



[View online »](#)

Product images:



Western blot analysis on HuvEc cell lysate using PARK7 Antibody