

## Product datasheet for **TA347571**

### DMC1 Rabbit Polyclonal Antibody

#### Product data:

Product Type:	Primary Antibodies
Applications:	WB
Recommended Dilution:	WB: 1:500-1:3000
Reactivity:	Human
Host:	Rabbit
Isotype:	IgG
Clonality:	Polyclonal
Immunogen:	The immunogen for anti-BARD1 Antibody: A synthesized peptide derived from human BARD1
Formulation:	Rabbit IgG in phosphate buffered saline , pH 7.4, 150mM NaCl, 0.02% sodium azide and 50% glycerol. Store at -20?. Stable for 12 months from date of receipt
Concentration:	lot specific
Purification:	Affinity-chromatography
Conjugation:	Unconjugated
Storage:	Store at -20°C as received.
Stability:	Stable for 12 months from date of receipt.
Predicted Protein Size:	86 kDa
Gene Name:	DNA meiotic recombinase 1
Database Link:	<a href="#">NP_008999</a> <a href="#">Entrez Gene 11144 Human Q14565</a>
Background:	BARD1 the BRCA1-BARD1 heterodimer coordinates a diverse range of cellular pathways such as DNA damage repair, ubiquitination and transcriptional regulation to maintain genomic stability. Plays a central role in the control of the cell cycle in response to DNA damage. Acts by mediating ubiquitin E3 ligase activity that is required for its tumor suppressor function. Also forms a heterodimer with CSTF1/CSTF-50 to modulate mRNA processing and RNAP II stability by inhibiting pre-mRNA 3' cleavage. Colocalizes with BRCA1 into discrete subnuclear foci during S phase. Can translocate to the cytoplasm.
Synonyms:	dj199H16.1; DMC1H; LIM15

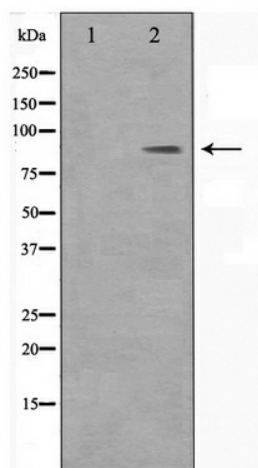


[View online »](#)

**Note:** BARD1 antibody detects endogenous levels of total BARD1

**Protein Families:** Druggable Genome

**Product images:**



Western blot analysis on HeLa cell lysate using BARD1 Antibody