

Product datasheet for **TA347569**

SERINC1 Rabbit Polyclonal Antibody

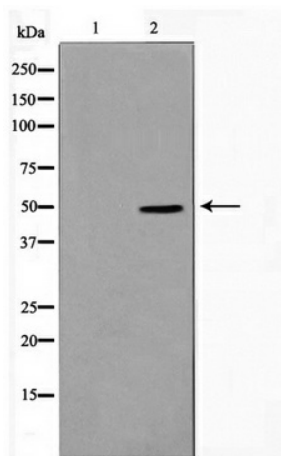
Product data:

Product Type:	Primary Antibodies
Applications:	WB
Recommended Dilution:	WB: 1:500-1:3000
Reactivity:	Human, Mouse, Rat
Host:	Rabbit
Isotype:	IgG
Clonality:	Polyclonal
Immunogen:	The immunogen for anti-SERC1 Antibody: A synthesized peptide derived from human SERC1
Formulation:	Rabbit IgG in phosphate buffered saline , pH 7.4, 150mM NaCl, 0.02% sodium azide and 50% glycerol. Store at -20?. Stable for 12 months from date of receipt
Concentration:	lot specific
Purification:	Affinity-chromatography
Conjugation:	Unconjugated
Storage:	Store at -20°C as received.
Stability:	Stable for 12 months from date of receipt.
Predicted Protein Size:	48 kDa
Gene Name:	serine incorporator 1
Database Link:	NP_065806 Entrez Gene 56442 Mouse Entrez Gene 294421 Rat Entrez Gene 57515 Human Q9NRX5
Background:	SERINC1 Enhances the incorporation of serine into phosphatidylserine and sphingolipids. Belongs to the TDE1 family. Interacts with SPTLC1.
Synonyms:	TDE1L; TDE2; TMS-2; TMS2
Note:	SERC1 antibody detects endogenous levels of total SERC1
Protein Families:	Transmembrane



[View online »](#)

Product images:



Western blot analysis on HepG2 cell lysate using
SERINC1 Antibody