

Product datasheet for **TA347568**

MNK1 (MKNK1) Rabbit Polyclonal Antibody

Product data:

Product Type:	Primary Antibodies
Applications:	WB
Recommended Dilution:	WB: 1:500-1:3000
Reactivity:	Human, Mouse
Host:	Rabbit
Isotype:	IgG
Clonality:	Polyclonal
Immunogen:	The immunogen for anti-MKNK1 Antibody: A synthesized peptide derived from human MKNK1
Formulation:	Rabbit IgG in phosphate buffered saline , pH 7.4, 150mM NaCl, 0.02% sodium azide and 50% glycerol. Store at -20?. Stable for 12 months from date of receipt
Concentration:	lot specific
Purification:	Affinity-chromatography
Conjugation:	Unconjugated
Storage:	Store at -20°C as received.
Stability:	Stable for 12 months from date of receipt.
Predicted Protein Size:	51 kDa
Gene Name:	MAP kinase interacting serine/threonine kinase 1
Database Link:	NP_945324 Entrez Gene 17346 Mouse Entrez Gene 8569 Human Q9BUB5
Background:	Mnk1 a CAM kinase of the MAPKKAPK family that can regulate translation. Following activation by MAP kinases, Mnk1 phosphorylates eIF4E at Ser209, increasing its affinity for the 7-methylguanosine-containing mRNA cap. Two MAPK phosphorylation sites in mouse Mnk1 (Thr197 and Thr202) are essential for its kinase activity. Three alternatively spliced human isoforms have been described.
Synonyms:	MNK1



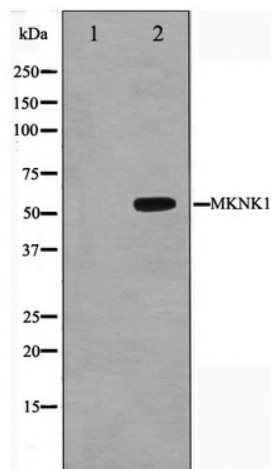
[View online »](#)

Note: MNK1 antibody detects endogenous levels of total MNK1

Protein Families: Druggable Genome, Protein Kinase

Protein Pathways: Insulin signaling pathway, MAPK signaling pathway

Product images:



Western blot analysis on HeLa cell lysate using MNK1 Antibody