

## Product datasheet for **TA347567**

### HFH4 (FOXJ1) Rabbit Polyclonal Antibody

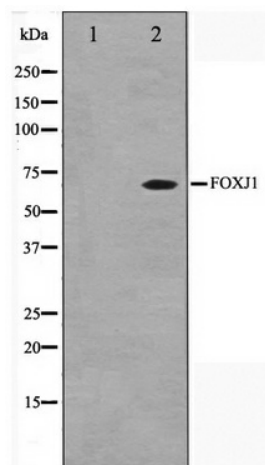
#### Product data:

Product Type:	Primary Antibodies
Applications:	WB
Recommended Dilution:	WB: 1:500-1:3000
Reactivity:	Human, Mouse, Rat
Host:	Rabbit
Isotype:	IgG
Clonality:	Polyclonal
Immunogen:	The immunogen for anti-FOXJ1 Antibody: A synthesized peptide derived from human FOXJ1
Formulation:	Rabbit IgG in phosphate buffered saline , pH 7.4, 150mM NaCl, 0.02% sodium azide and 50% glycerol. Store at -20?. Stable for 12 months from date of receipt
Concentration:	lot specific
Purification:	Affinity-chromatography
Conjugation:	Unconjugated
Storage:	Store at -20°C as received.
Stability:	Stable for 12 months from date of receipt.
Predicted Protein Size:	60 kDa
Gene Name:	forkhead box J1
Database Link:	<a href="#">NP_001445</a> <a href="#">Entrez Gene 15223 MouseEntrez Gene 116557 RatEntrez Gene 2302 Human Q92949</a>
Background:	FOXJ1 May play an important role in cell fate determination during lung development and in spermatogenesis. Note:
Synonyms:	FKHL13; HFH-4; HFH4
Note:	FOXJ1 antibody detects endogenous levels of total FOXJ1
Protein Families:	Transcription Factors



[View online »](#)

## Product images:



Western blot analysis on LOVO cell lysate using FOXJ1 Antibody