

## Product datasheet for **TA347566**

### SMAD4 Rabbit Polyclonal Antibody

#### Product data:

Product Type:	Primary Antibodies
Applications:	WB
Recommended Dilution:	WB: 1:500-1:3000
Reactivity:	Human, Mouse, Rat
Host:	Rabbit
Isotype:	IgG
Clonality:	Polyclonal
Immunogen:	The immunogen for anti-Smad4 Antibody: A synthesized peptide derived from human Smad4
Formulation:	Rabbit IgG in phosphate buffered saline , pH 7.4, 150mM NaCl, 0.02% sodium azide and 50% glycerol. Store at -20?. Stable for 12 months from date of receipt
Concentration:	lot specific
Purification:	Affinity-chromatography
Conjugation:	Unconjugated
Storage:	Store at -20°C as received.
Stability:	Stable for 12 months from date of receipt.
Predicted Protein Size:	60 kDa
Gene Name:	SMAD family member 4
Database Link:	<a href="#">NP_005350</a> <a href="#">Entrez Gene 17128 MouseEntrez Gene 50554 RatEntrez Gene 4089 Human Q13485</a>
Background:	Smad4 transcription factor that mediates signal transduction by the transforming growth factor superfamily. The common smad (co-smad). Binds directly to consensus DNA-binding elements in the promoters of target genes. Promotes binding of the Smad2/Smad4/Fast-1 complex to DNA and provides an activation function required for Smad1 or Smad2 to stimulate transcription.
Synonyms:	DPC4; JIP; MADH4; MYHRS
Note:	Smad4 antibody detects endogenous levels of total Smad4

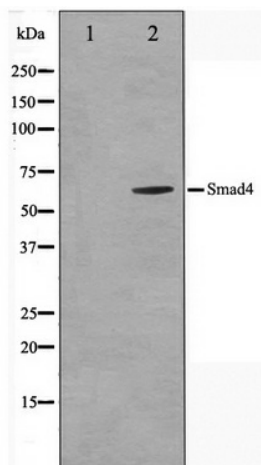


[View online »](#)

**Protein Families:** Druggable Genome, Transcription Factors

**Protein Pathways:** Adherens junction, Cell cycle, Chronic myeloid leukemia, Colorectal cancer, Pancreatic cancer, Pathways in cancer, TGF-beta signaling pathway, Wnt signaling pathway

**Product images:**



Western blot analysis on HeLa cell lysate using Smad4 Antibody