

Product datasheet for **TA347563**

TNFRSF1B Rabbit Polyclonal Antibody

Product data:

Product Type:	Primary Antibodies
Applications:	WB
Recommended Dilution:	WB: 1:500-1:3000
Reactivity:	Human, Mouse, Rat
Host:	Rabbit
Isotype:	IgG
Clonality:	Polyclonal
Immunogen:	The immunogen for anti-TNF-R2 Antibody: A synthesized peptide derived from human TNF-R2
Formulation:	Rabbit IgG in phosphate buffered saline , pH 7.4, 150mM NaCl, 0.02% sodium azide and 50% glycerol. Store at -20?. Stable for 12 months from date of receipt
Concentration:	lot specific
Purification:	Affinity-chromatography
Conjugation:	Unconjugated
Storage:	Store at -20°C as received.
Stability:	Stable for 12 months from date of receipt.
Predicted Protein Size:	48 kDa
Gene Name:	tumor necrosis factor receptor superfamily member 1B
Database Link:	NP_001057 Entrez Gene 21938 Mouse Entrez Gene 156767 Rat Entrez Gene 7133 Human P20333
Background:	TNF-R2 Receptor with high affinity for TNFSF2/TNF-alpha and approximately 5-fold lower affinity for homotrimeric TNFSF1/lymphotoxin-alpha. The TRAF1/TRAF2 complex recruits the apoptotic suppressors BIRC2 and BIRC3 to TNFRSF1B/TNFR2. This receptor mediates most of the metabolic effects of TNF-alpha. Isoform 2 blocks TNF-alpha-induced apoptosis, which suggests that it regulates TNF-alpha function by antagonizing its biological activity.
Synonyms:	CD120b; p75; p75TNFR; TBPII; TNF-R-II; TNF-R75; TNFBR; TNFR1B; TNFR2; TNFR80

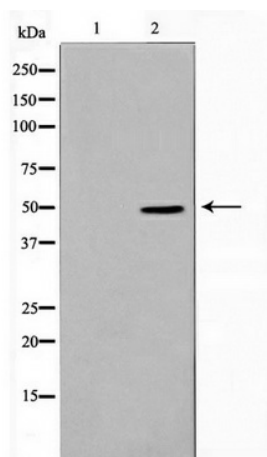


[View online »](#)

Note: TNF-R2 antibody detects endogenous levels of total TNF-R2

Protein Families: Druggable Genome, Secreted Protein, Transmembrane

Protein Pathways: Adipocytokine signaling pathway, Amyotrophic lateral sclerosis (ALS), Cytokine-cytokine receptor interaction

Product images:

Western blot analysis on LOVO cell lysate using TNF-R2 Antibody