

Product datasheet for **TA347560**

PRKACA Rabbit Polyclonal Antibody

Product data:

Product Type:	Primary Antibodies
Applications:	WB
Recommended Dilution:	WB: 1:500-1:3000
Reactivity:	Human, Mouse, Rat
Host:	Rabbit
Isotype:	IgG
Clonality:	Polyclonal
Immunogen:	The immunogen for anti-KAPC A/B Antibody: A synthesized peptide derived from human KAPC A/B
Formulation:	Rabbit IgG in phosphate buffered saline , pH 7.4, 150mM NaCl, 0.02% sodium azide and 50% glycerol. Store at -20?. Stable for 12 months from date of receipt
Concentration:	lot specific
Purification:	Affinity-chromatography
Conjugation:	Unconjugated
Storage:	Store at -20°C as received.
Stability:	Stable for 12 months from date of receipt.
Predicted Protein Size:	38 kDa
Gene Name:	protein kinase cAMP-activated catalytic subunit alpha
Database Link:	NP_997401 Entrez Gene 18747 Mouse Entrez Gene 25636 Rat Entrez Gene 5566 Human P17612
Background:	PKACa catalytic subunit of cAMP-dependent protein kinase alpha, an AGC kinase. A number of inactive tetrameric holoenzymes are produced by the combination of homo- or heterodimers of the different regulatory subunits associated with two catalytic subunits. cAMP causes the dissociation of the inactive holoenzyme into a dimer of regulatory subunits bound to four cAMP and two free monomeric catalytic subunits.
Synonyms:	PKACA; PPNAD4



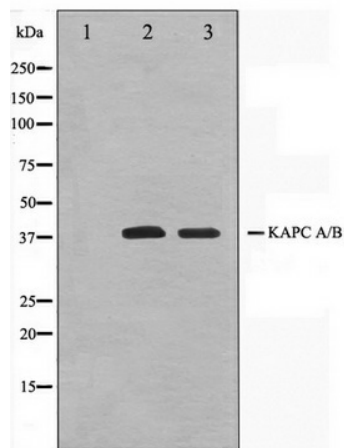
[View online »](#)

Note: KAPC A/B antibody detects endogenous levels of total KAPC A/B

Protein Families: Druggable Genome, Protein Kinase

Protein Pathways: Apoptosis, Calcium signaling pathway, Chemokine signaling pathway, Dilated cardiomyopathy, Gap junction, GnRH signaling pathway, Hedgehog signaling pathway, Insulin signaling pathway, Long-term potentiation, MAPK signaling pathway, Melanogenesis, Olfactory transduction, Oocyte meiosis, Prion diseases, Progesterone-mediated oocyte maturation, Taste transduction, Vascular smooth muscle contraction, Vibrio cholerae infection, Wnt signaling pathway

Product images:



Western blot analysis on Jurkat and K562 cell lysate using KAPC A/B Antibody