

Product datasheet for **TA347558**

H10 (H1F0) Rabbit Polyclonal Antibody

Product data:

Product Type:	Primary Antibodies
Applications:	WB
Recommended Dilution:	WB: 1:500-1:3000
Reactivity:	Human
Host:	Rabbit
Isotype:	IgG
Clonality:	Polyclonal
Immunogen:	The immunogen for anti-Histone H1.0 Antibody: A synthesized peptide derived from human Histone H1.0
Formulation:	Rabbit IgG in phosphate buffered saline , pH 7.4, 150mM NaCl, 0.02% sodium azide and 50% glycerol. Store at -20?. Stable for 12 months from date of receipt
Concentration:	lot specific
Purification:	Affinity-chromatography
Conjugation:	Unconjugated
Storage:	Store at -20°C as received.
Stability:	Stable for 12 months from date of receipt.
Predicted Protein Size:	20 kDa
Gene Name:	H1 histone family member 0
Database Link:	NP_005309 Entrez Gene 3005 Human P07305
Background:	H1F0 Histones H1 are necessary for the condensation of nucleosome chains into higher order structures. The H1F0 histones are found in cells that are in terminal stages of differentiation or that have low rates of cell division. Belongs to the histone H1/H5 family. Both the unedited and the RNA edited versions are induced by butyrate (at protein level). Only RNA edited version is induced by DTT, vinblastine or TNF (at protein level).
Synonyms:	H1FV; H10

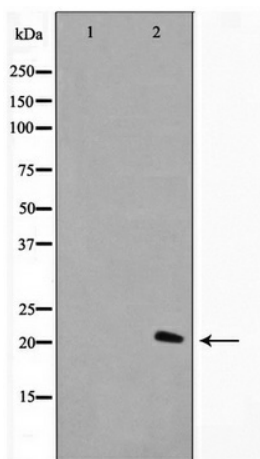


[View online »](#)

Note: Histone H1.0 antibody detects endogenous levels of total Histone H1.0

Protein Families: Druggable Genome

Product images:



Western blot analysis on A549 cell lysate using Histone H1.0 Antibody