

Product datasheet for **TA347555**

MOS Rabbit Polyclonal Antibody

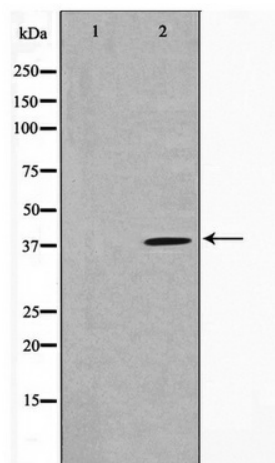
Product data:

Product Type:	Primary Antibodies
Applications:	WB
Recommended Dilution:	WB: 1:500-1:3000
Reactivity:	Human
Host:	Rabbit
Isotype:	IgG
Clonality:	Polyclonal
Immunogen:	The immunogen for anti-MOS Antibody: A synthesized peptide derived from human MOS
Formulation:	Rabbit IgG in phosphate buffered saline , pH 7.4, 150mM NaCl, 0.02% sodium azide and 50% glycerol. Store at -20?. Stable for 12 months from date of receipt
Concentration:	lot specific
Purification:	Affinity-chromatography
Conjugation:	Unconjugated
Storage:	Store at -20°C as received.
Stability:	Stable for 12 months from date of receipt.
Predicted Protein Size:	40 kDa
Gene Name:	v-mos Moloney murine sarcoma viral oncogene homolog
Database Link:	NP_005363 Entrez Gene 4342 Human P00540
Background:	Mos a proto-oncogenic serine/threonine kinase of the MOS family. Expressed predominantly in germ cells. Crucial for normal oocyte meiosis and female fertility in mice.
Synonyms:	MSV
Note:	MOS antibody detects endogenous levels of total MOS
Protein Families:	Druggable Genome, Protein Kinase
Protein Pathways:	MAPK signaling pathway, Oocyte meiosis, Progesterone-mediated oocyte maturation, Regulation of actin cytoskeleton



[View online »](#)

Product images:



Western blot analysis on 293 cell lysate using MOS Antibody