

Product datasheet for **TA347554**

Securin (PTTG1) Rabbit Polyclonal Antibody

Product data:

Product Type:	Primary Antibodies
Applications:	WB
Recommended Dilution:	WB: 1:500-1:3000
Reactivity:	Human
Host:	Rabbit
Isotype:	IgG
Clonality:	Polyclonal
Immunogen:	The immunogen for anti-PTTG1 Antibody: A synthesized peptide derived from human PTTG1
Formulation:	Rabbit IgG in phosphate buffered saline , pH 7.4, 150mM NaCl, 0.02% sodium azide and 50% glycerol. Store at -20?. Stable for 12 months from date of receipt
Concentration:	lot specific
Purification:	Affinity-chromatography
Conjugation:	Unconjugated
Storage:	Store at -20°C as received.
Stability:	Stable for 12 months from date of receipt.
Predicted Protein Size:	30 kDa
Gene Name:	pituitary tumor-transforming 1
Database Link:	NP_004210 Entrez Gene 9232 Human O95997
Background:	securin Regulatory protein, which plays a central role in chromosome stability, in the p53/TP53 pathway, and DNA repair. Probably acts by blocking the action of key proteins. During the mitosis, it blocks Separase/ESPL1 function, preventing the proteolysis of the cohesin complex and the subsequent segregation of the chromosomes. At the onset of anaphase, it is ubiquitinated, conducting to its destruction and to the liberation of ESPL1. Its function is however not limited to a blocking activity, since it is required to activate ESPL1. Negatively regulates the transcriptional activity and related apoptosis activity of TP53.
Synonyms:	EAP1; HPTTG; PTTG; TUTR1



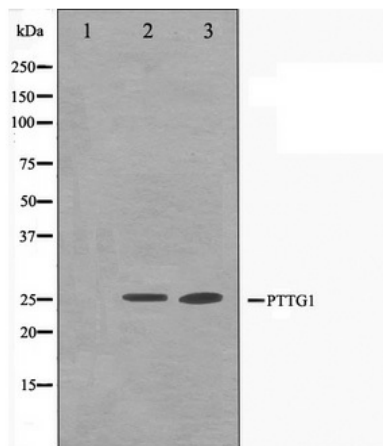
[View online »](#)

Note: PTTG1 antibody detects endogenous levels of total PTTG1

Protein Families: Druggable Genome, Transcription Factors

Protein Pathways: Cell cycle, Oocyte meiosis

Product images:



Western blot analysis on Jurkat and K562 cell lysate using PTTG1 Antibody