

Product datasheet for **TA347553**

MBD3 Rabbit Polyclonal Antibody

Product data:

Product Type:	Primary Antibodies
Applications:	WB
Recommended Dilution:	WB: 1:500-1:3000
Reactivity:	Human, Mouse
Host:	Rabbit
Isotype:	IgG
Clonality:	Polyclonal
Immunogen:	The immunogen for anti-MBD3 Antibody: A synthesized peptide derived from human MBD3
Formulation:	Rabbit IgG in phosphate buffered saline , pH 7.4, 150mM NaCl, 0.02% sodium azide and 50% glycerol. Store at -20?. Stable for 12 months from date of receipt
Concentration:	lot specific
Purification:	Affinity-chromatography
Conjugation:	Unconjugated
Storage:	Store at -20°C as received.
Stability:	Stable for 12 months from date of receipt.
Predicted Protein Size:	33 kDa
Gene Name:	methyl-CpG binding domain protein 3
Database Link:	NP_001268382 Entrez Gene 17192 Mouse Entrez Gene 53615 Human O95983
Background:	MBD3 methyl-CpG binding (MBD) proteins appear to bind differentially methylated domains (DMDs) of DNA, to recruit repression complexes, and to silence the locus. The methyl CpG binding domain of human MBD3 may not directly bind mCpG but does interact with the NuRD/Mi2 components HDAC1 and MTA2. Plays a role in histone deacetylation and nucleosome remodeling. Increased levels have been reported in lung cancer and glioblastomas and may be a therapeutic target.
Synonyms:	MBD3

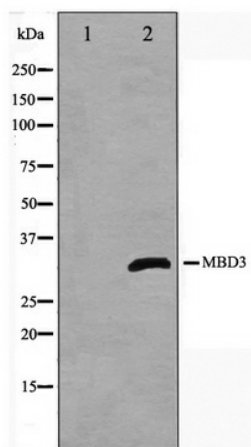


[View online »](#)

Note: MBD3 antibody detects endogenous levels of total MBD3

Protein Families: Druggable Genome, Transcription Factors

Product images:



Western blot analysis on Jurkat cell lysate using MBD3 Antibody