

## Product datasheet for **TA347552**

### TAF5L Rabbit Polyclonal Antibody

#### Product data:

Product Type:	Primary Antibodies
Applications:	WB
Recommended Dilution:	WB: 1:500-1:3000
Reactivity:	Human
Host:	Rabbit
Isotype:	IgG
Clonality:	Polyclonal
Immunogen:	The immunogen for anti-TAF5L Antibody: A synthesized peptide derived from human TAF5L
Formulation:	Rabbit IgG in phosphate buffered saline , pH 7.4, 150mM NaCl, 0.02% sodium azide and 50% glycerol. Store at -20?. Stable for 12 months from date of receipt
Concentration:	lot specific
Purification:	Affinity-chromatography
Conjugation:	Unconjugated
Storage:	Store at -20°C as received.
Stability:	Stable for 12 months from date of receipt.
Predicted Protein Size:	66 kDa
Gene Name:	TATA-box binding protein associated factor 5 like
Database Link:	<a href="#">NP_001020418</a> <a href="#">Entrez Gene 27097 Human</a> <a href="#">Q75529</a>
Background:	TAF5L Functions as a component of the PCAF complex. The PCAF complex is capable of efficiently acetylating histones in a nucleosomal context. The PCAF complex could be considered as the human version of the yeast SAGA complex. Belongs to the WD repeat TAF5 family. The PCAF complex is composed of a number of TBP- associated factors (TAFs), such as TAF5, TAF5L, TAF6, TAF6L, TAF9, TAF10 and TAF12, PCAF, and also PCAF-associated factors (PAFs), such as TADA2L/ADA2, TADA3L/ADA3 and SPT3.
Synonyms:	PAF65B



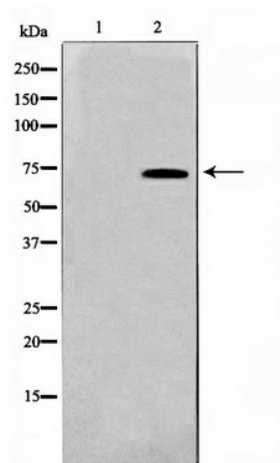
[View online »](#)

**Note:** TAF5L antibody detects endogenous levels of total TAF5L

**Protein Families:** Transcription Factors

**Protein Pathways:** Basal transcription factors

**Product images:**



Western blot analysis on HT29 cell lysate using TAF5L Antibody