

Product datasheet for **TA347551**

ADA2a (TADA2A) Rabbit Polyclonal Antibody

Product data:

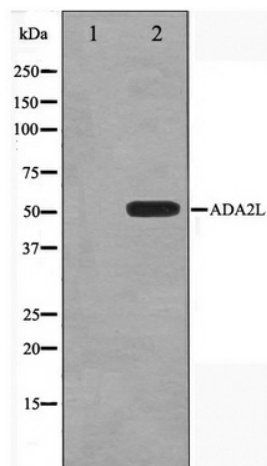
Product Type:	Primary Antibodies
Applications:	WB
Recommended Dilution:	WB: 1:500-1:3000
Reactivity:	Human, Mouse, Rat
Host:	Rabbit
Isotype:	IgG
Clonality:	Polyclonal
Immunogen:	The immunogen for anti-ADA2L Antibody: A synthesized peptide derived from human ADA2L
Formulation:	Rabbit IgG in phosphate buffered saline , pH 7.4, 150mM NaCl, 0.02% sodium azide and 50% glycerol. Store at -20?. Stable for 12 months from date of receipt
Concentration:	lot specific
Purification:	Affinity-chromatography
Conjugation:	Unconjugated
Storage:	Store at -20°C as received.
Stability:	Stable for 12 months from date of receipt.
Predicted Protein Size:	47 kDa
Gene Name:	transcriptional adaptor 2A
Database Link:	NP_001159577 Entrez Gene 217031 MouseEntrez Gene 360581 RatEntrez Gene 6871 Human O75478
Background:	TADA2L Component of the ATAC complex, a complex with histone acetyltransferase activity on histones H3 and H4. Required for the function of some acidic activation domains, which activate transcription from a distant site. Binds double- stranded DNA. Binds dinucleosomes, probably at the linker region between neighboring nucleosomes. Plays a role in chromatin remodeling. Interacts with GCN5 and NR3C1.
Synonyms:	ADA2; ADA2A; hADA2; KL04P; TADA2L
Note:	ADA2L antibody detects endogenous levels of total ADA2L



[View online »](#)

Protein Families: Transcription Factors

Product images:



Western blot analysis on COLO205 cell lysate using ADA2L Antibody