

## Product datasheet for **TA347549**

### TBX10 Rabbit Polyclonal Antibody

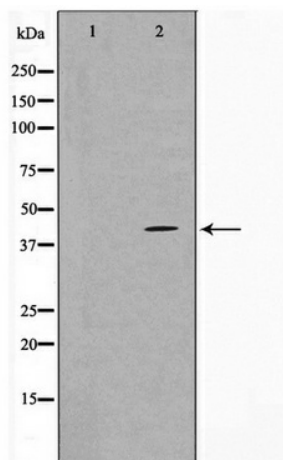
#### Product data:

Product Type:	Primary Antibodies
Applications:	WB
Recommended Dilution:	WB: 1:500-1:3000
Reactivity:	Human
Host:	Rabbit
Isotype:	IgG
Clonality:	Polyclonal
Immunogen:	The immunogen for anti-TBX10 Antibody: A synthesized peptide derived from human TBX10
Formulation:	Rabbit IgG in phosphate buffered saline , pH 7.4, 150mM NaCl, 0.02% sodium azide and 50% glycerol. Store at -20?. Stable for 12 months from date of receipt
Concentration:	lot specific
Purification:	Affinity-chromatography
Conjugation:	Unconjugated
Storage:	Store at -20°C as received.
Stability:	Stable for 12 months from date of receipt.
Predicted Protein Size:	43 kDa
Gene Name:	T-box 10
Database Link:	<a href="#">NP_005986</a> <a href="#">Entrez Gene 347853 Human</a> <a href="#">O75333</a>
Background:	TBX10 Probable transcriptional regulator involved in developmental processes.
Synonyms:	TBX7; TBX13
Note:	TBX10 antibody detects endogenous levels of total TBX10



[View online »](#)

## Product images:



Western blot analysis on HT29 cell lysate using TBX10 Antibody