

Product datasheet for **TA347548**

PFKFB2 Rabbit Polyclonal Antibody

Product data:

Product Type:	Primary Antibodies
Applications:	WB
Recommended Dilution:	WB: 1:500-1:3000
Reactivity:	Human, Mouse
Host:	Rabbit
Isotype:	IgG
Clonality:	Polyclonal
Immunogen:	The immunogen for anti-PFKFB2 Antibody: A synthesized peptide derived from human PFKFB2
Formulation:	Rabbit IgG in phosphate buffered saline , pH 7.4, 150mM NaCl, 0.02% sodium azide and 50% glycerol. Store at -20?. Stable for 12 months from date of receipt
Concentration:	lot specific
Purification:	Affinity-chromatography
Conjugation:	Unconjugated
Storage:	Store at -20°C as received.
Stability:	Stable for 12 months from date of receipt.
Predicted Protein Size:	58 kDa
Gene Name:	6-phosphofructo-2-kinase/fructose-2,6-biphosphatase 2
Database Link:	NP_006203 Entrez Gene 18640 Mouse Entrez Gene 5208 Human O60825
Background:	PFKFB2 a bifunctional heterodimeric enzyme involved in both the synthesis and degradation of fructose-2,6-bisphosphate, a regulatory molecule that controls glycolysis in eukaryotes. Regulates fructose-2,6-bisphosphate levels in the heart, while a related enzyme encoded by a different gene regulates fructose-2,6-bisphosphate levels in the liver and muscle.
Synonyms:	FBPase-2; PFK-2
Note:	PFKFB2 antibody detects endogenous levels of total PFKFB2

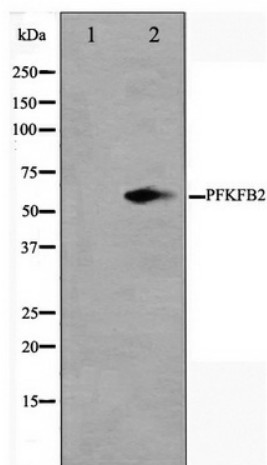


[View online »](#)

Protein Families: Druggable Genome

Protein Pathways: Fructose and mannose metabolism

Product images:



Western blot analysis on 293 cell lysate using PFKFB2 Antibody