

Product datasheet for **TA347547**

MSC Rabbit Polyclonal Antibody

Product data:

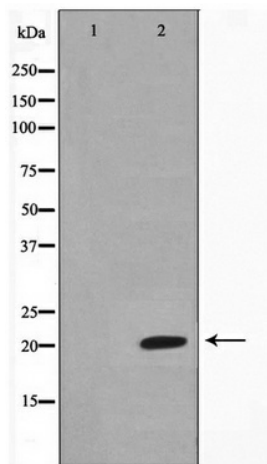
Product Type:	Primary Antibodies
Applications:	WB
Recommended Dilution:	WB: 1:500-1:3000
Reactivity:	Human, Mouse
Host:	Rabbit
Isotype:	IgG
Clonality:	Polyclonal
Immunogen:	The immunogen for anti-Musculin Antibody: A synthesized peptide derived from human Musculin
Formulation:	Rabbit IgG in phosphate buffered saline , pH 7.4, 150mM NaCl, 0.02% sodium azide and 50% glycerol. Store at -20?. Stable for 12 months from date of receipt
Concentration:	lot specific
Purification:	Affinity-chromatography
Conjugation:	Unconjugated
Storage:	Store at -20°C as received.
Stability:	Stable for 12 months from date of receipt.
Predicted Protein Size:	22 kDa
Gene Name:	musculin
Database Link:	NP_005089 Entrez Gene 17681 Mouse Entrez Gene 9242 Human O60682
Background:	MSC Transcription repressor capable of inhibiting the transactivation capability of TCF3/E47. May play a role in regulating antigen-dependent B-cell differentiation. Efficient DNA binding requires dimerization with another bHLH protein. Binds DNA as a homodimer or a heterodimer.
Synonyms:	ABF-1; ABF1; bHLHa22; MYOR
Note:	Musculin antibody detects endogenous levels of total Musculin



[View online »](#)

Protein Families: Druggable Genome, Transcription Factors

Product images:



Western blot analysis on Jurkat cell lysate using Musculin Antibody