

Product datasheet for **TA347546**

LMX1B Rabbit Polyclonal Antibody

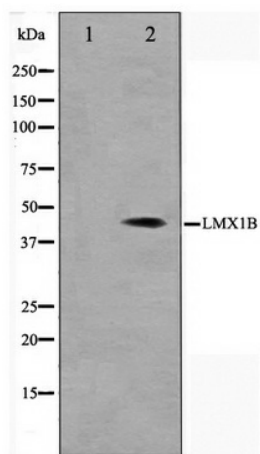
Product data:

Product Type:	Primary Antibodies
Applications:	WB
Recommended Dilution:	WB: 1:500-1:3000
Reactivity:	Human, Mouse
Host:	Rabbit
Isotype:	IgG
Clonality:	Polyclonal
Immunogen:	The immunogen for anti-LMX1B Antibody: A synthesized peptide derived from human LMX1B
Formulation:	Rabbit IgG in phosphate buffered saline , pH 7.4, 150mM NaCl, 0.02% sodium azide and 50% glycerol. Store at -20?. Stable for 12 months from date of receipt
Concentration:	lot specific
Purification:	Affinity-chromatography
Conjugation:	Unconjugated
Storage:	Store at -20°C as received.
Stability:	Stable for 12 months from date of receipt.
Predicted Protein Size:	40 kDa
Gene Name:	LIM homeobox transcription factor 1 beta
Database Link:	NP_002307 Entrez Gene 16917 Mouse Entrez Gene 4010 Human O60663
Background:	LMX1B Essential for the specification of dorsal limb fate at both the zeugopodal and autopodal levels. 2 isoforms of the human protein are produced by alternative splicing.
Synonyms:	LMX1.2; NPS1
Note:	LMX1B antibody detects endogenous levels of total LMX1B
Protein Families:	Transcription Factors



[View online »](#)

Product images:



Western blot analysis on Jurkat cell lysate using LMX1B Antibody