

Product datasheet for **TA347545**

ZIC1 Rabbit Polyclonal Antibody

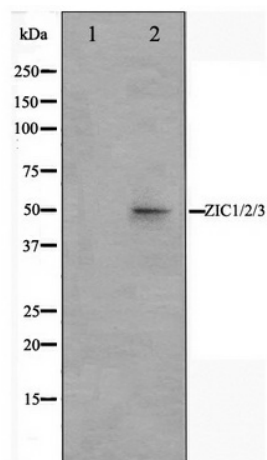
Product data:

Product Type:	Primary Antibodies
Applications:	WB
Recommended Dilution:	WB: 1:500-1:3000
Reactivity:	Human, Mouse
Host:	Rabbit
Isotype:	IgG
Clonality:	Polyclonal
Immunogen:	The immunogen for anti-ZIC1/2/3 Antibody: A synthesized peptide derived from human ZIC1/2/3
Formulation:	Rabbit IgG in phosphate buffered saline , pH 7.4, 150mM NaCl, 0.02% sodium azide and 50% glycerol. Store at -20?. Stable for 12 months from date of receipt
Concentration:	lot specific
Purification:	Affinity-chromatography
Conjugation:	Unconjugated
Storage:	Store at -20°C as received.
Stability:	Stable for 12 months from date of receipt.
Predicted Protein Size:	51 kDa
Gene Name:	Zic family member 1
Database Link:	NP_003403 Entrez Gene 22771 Mouse Entrez Gene 7545 Human Q15915
Background:	Q15915; ZIC; Zic family member 1 (odd-paired Drosophila homolog); Zic family member 1 (odd-paired homolog, Drosophila); ZIC1; zinc finger protein of the cerebellum 1; zinc finger protein ZIC 1; ZNF201
Synonyms:	CRS6; ZIC; ZNF201
Note:	ZIC1/2/3 antibody detects endogenous levels of total ZIC1/2/3
Protein Families:	Druggable Genome



[View online »](#)

Product images:



Western blot analysis on Jurkat cell lysate using ZIC1/2/3 Antibody