

Product datasheet for **TA347544**

DLX3 Rabbit Polyclonal Antibody

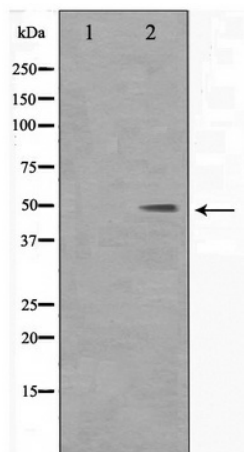
Product data:

Product Type:	Primary Antibodies
Applications:	WB
Recommended Dilution:	WB: 1:500-1:3000
Reactivity:	Human, Mouse
Host:	Rabbit
Isotype:	IgG
Clonality:	Polyclonal
Immunogen:	The immunogen for anti-DLX3 Antibody: A synthesized peptide derived from human DLX3
Formulation:	Rabbit IgG in phosphate buffered saline , pH 7.4, 150mM NaCl, 0.02% sodium azide and 50% glycerol. Store at -20?. Stable for 12 months from date of receipt
Concentration:	lot specific
Purification:	Affinity-chromatography
Conjugation:	Unconjugated
Storage:	Store at -20°C as received.
Stability:	Stable for 12 months from date of receipt.
Predicted Protein Size:	45 kDa
Gene Name:	distal-less homeobox 3
Database Link:	NP_005211 Entrez Gene 13393 Mouse Entrez Gene 1747 Human O60479
Background:	Dlx3 Likely to play a regulatory role in the development of the ventral forebrain. May play a role in craniofacial patterning and morphogenesis. Belongs to the distal-less homeobox family.
Synonyms:	AI4; TDO
Note:	DLX3 antibody detects endogenous levels of total DLX3
Protein Families:	Druggable Genome, Transcription Factors



[View online »](#)

Product images:



Western blot analysis on 293 cell lysate using DLX3 Antibody