

## Product datasheet for **TA347541**

### Ephrin A2 (EFNA2) Rabbit Polyclonal Antibody

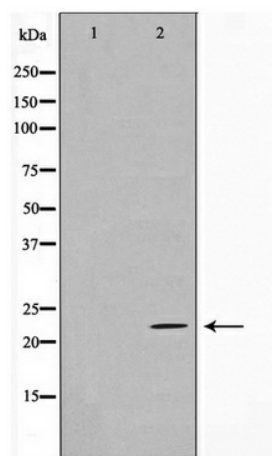
#### Product data:

Product Type:	Primary Antibodies
Applications:	WB
Recommended Dilution:	WB: 1:500-1:3000
Reactivity:	Human, Mouse
Host:	Rabbit
Isotype:	IgG
Clonality:	Polyclonal
Immunogen:	The immunogen for anti-EFNA2 Antibody: A synthesized peptide derived from human EFNA2
Formulation:	Rabbit IgG in phosphate buffered saline , pH 7.4, 150mM NaCl, 0.02% sodium azide and 50% glycerol. Store at -20?. Stable for 12 months from date of receipt
Concentration:	lot specific
Purification:	Affinity-chromatography
Conjugation:	Unconjugated
Storage:	Store at -20°C as received.
Stability:	Stable for 12 months from date of receipt.
Predicted Protein Size:	24 kDa
Gene Name:	ephrin A2
Database Link:	<a href="#">NP_001396</a> <a href="#">Entrez Gene 13637 Mouse</a> <a href="#">Entrez Gene 1943 Human</a> <a href="#">O43921</a>
Background:	EFNA2 Belongs to the ephrin family. Binds to the receptor tyrosine kinases EPHA3, EPHA4 and EPHA5.
Synonyms:	ELF-1; EPLG6; HEK7-L; LERK-6; LERK6
Note:	EFNA2 antibody detects endogenous levels of total EFNA2
Protein Families:	Druggable Genome
Protein Pathways:	Axon guidance



[View online »](#)

## Product images:



Western blot analysis on HeLa cell lysate using EFNA2 Antibody