

Product datasheet for **TA347540**

AIRE Rabbit Polyclonal Antibody

Product data:

Product Type:	Primary Antibodies
Applications:	WB
Recommended Dilution:	WB: 1:500-1:3000
Reactivity:	Human, Mouse
Host:	Rabbit
Isotype:	IgG
Clonality:	Polyclonal
Immunogen:	The immunogen for anti-AIRE Antibody: A synthesized peptide derived from human AIRE
Formulation:	Rabbit IgG in phosphate buffered saline , pH 7.4, 150mM NaCl, 0.02% sodium azide and 50% glycerol. Store at -20?. Stable for 12 months from date of receipt
Concentration:	lot specific
Purification:	Affinity-chromatography
Conjugation:	Unconjugated
Storage:	Store at -20°C as received.
Stability:	Stable for 12 months from date of receipt.
Predicted Protein Size:	60 kDa
Gene Name:	autoimmune regulator
Database Link:	NP_000649 Entrez Gene 11634 Mouse Entrez Gene 326 Human O43918
Background:	AIRE Transcriptional regulator that binds to DNA as a dimer or as a tetramer, but not as a monomer. Binds to G-doublets in an A/T-rich environment; the preferred motif is a tandem repeat of 5'- ATTGGTTA-3' combined with a 5'-TTATTA-3' box. Binds to nucleosomes. Binds to chromatin and interacts selectively with histone H3 that is not methylated at 'Lys-4', not phosphorylated at 'Thr-3' and not methylated at 'Arg-2'.
Synonyms:	AIRE1; APECED; APS1; APSI; PGA1
Note:	AIRE antibody detects endogenous levels of total AIRE

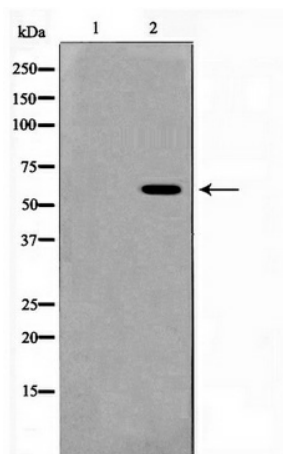


[View online »](#)

Protein Families: Druggable Genome

Protein Pathways: Primary immunodeficiency, Ubiquitin mediated proteolysis

Product images:



Western blot analysis on HeLa cell lysate using AIRE Antibody