

## Product datasheet for **TA347539**

### AKAP8 Rabbit Polyclonal Antibody

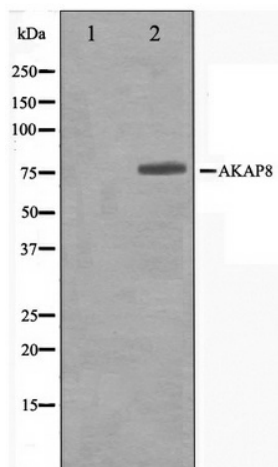
#### Product data:

Product Type:	Primary Antibodies
Applications:	WB
Recommended Dilution:	WB: 1:500-1:3000
Reactivity:	Human, Mouse, Rat
Host:	Rabbit
Isotype:	IgG
Clonality:	Polyclonal
Immunogen:	The immunogen for anti-AKAP8 Antibody: A synthesized peptide derived from human AKAP8
Formulation:	Rabbit IgG in phosphate buffered saline , pH 7.4, 150mM NaCl, 0.02% sodium azide and 50% glycerol. Store at -20?. Stable for 12 months from date of receipt
Concentration:	lot specific
Purification:	Affinity-chromatography
Conjugation:	Unconjugated
Storage:	Store at -20°C as received.
Stability:	Stable for 12 months from date of receipt.
Predicted Protein Size:	76 kDa
Gene Name:	A-kinase anchoring protein 8
Database Link:	<a href="#">NP_005849</a> <a href="#">Entrez Gene 56399</a> <a href="#">MouseEntrez Gene 116633</a> <a href="#">RatEntrez Gene 10270</a> <a href="#">Human O43823</a>
Background:	AKAP8 Anchoring protein that mediates the subcellular compartmentation of cAMP-dependent protein kinase (PKA type II). Belongs to the AKAP95 family. Binds to dimeric RII-alpha regulatory subunit of PKA during mitosis. Interacts (via C-terminus) with FIGN.
Synonyms:	AKAP-8; AKAP-95; AKAP 95; AKAP95
Note:	AKAP8 antibody detects endogenous levels of total AKAP8
Protein Families:	Druggable Genome



[View online »](#)

## Product images:



Western blot analysis on Jurkat cell lysate using AKAP8 Antibody