

Product datasheet for **TA347538**

AKAP10 Rabbit Polyclonal Antibody

Product data:

Product Type:	Primary Antibodies
Applications:	WB
Recommended Dilution:	WB: 1:500-1:3000
Reactivity:	Human, Mouse, Rat
Host:	Rabbit
Isotype:	IgG
Clonality:	Polyclonal
Immunogen:	The immunogen for anti-AKAP10 Antibody: A synthesized peptide derived from human AKAP10
Formulation:	Rabbit IgG in phosphate buffered saline , pH 7.4, 150mM NaCl, 0.02% sodium azide and 50% glycerol. Store at -20?. Stable for 12 months from date of receipt
Concentration:	lot specific
Purification:	Affinity-chromatography
Conjugation:	Unconjugated
Storage:	Store at -20°C as received.
Stability:	Stable for 12 months from date of receipt.
Predicted Protein Size:	73 kDa
Gene Name:	A-kinase anchoring protein 10
Database Link:	NP_009133 Entrez Gene 56697 Mouse Entrez Gene 360540 Rat Entrez Gene 11216 Human O43572
Background:	AKAP10 Differentially targeted protein that binds to type I and II regulatory subunits of protein kinase A and anchors them to the mitochondria or the plasma membrane. Although the physiological relevance between PKA and AKAPS with mitochondria is not fully understood, one idea is that BAD, a proapoptotic member, is phosphorylated and inactivated by mitochondria-anchored PKA.
Synonyms:	AKAP-10; D-AKAP-2; D-AKAP2; PRKA10

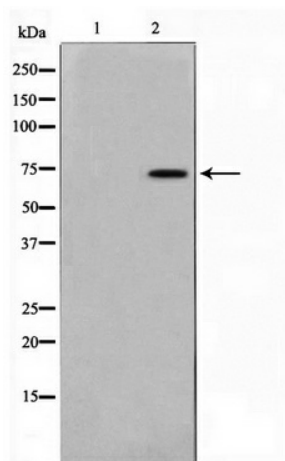


[View online »](#)

Note: AKAP10 antibody detects endogenous levels of total AKAP10

Protein Families: Druggable Genome

Product images:



Western blot analysis on mouse brain cell lysate using AKAP10 Antibody