

## Product datasheet for **TA347536**

### **TBX1 Rabbit Polyclonal Antibody**

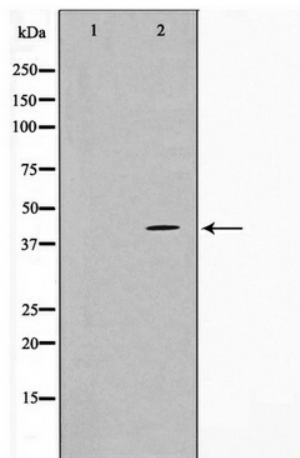
#### **Product data:**

<b>Product Type:</b>	Primary Antibodies
<b>Applications:</b>	WB
<b>Recommended Dilution:</b>	WB: 1:500-1:3000
<b>Reactivity:</b>	Human
<b>Host:</b>	Rabbit
<b>Isotype:</b>	IgG
<b>Clonality:</b>	Polyclonal
<b>Immunogen:</b>	The immunogen for anti-TBX1 Antibody: A synthesized peptide derived from human TBX1
<b>Formulation:</b>	Rabbit IgG in phosphate buffered saline , pH 7.4, 150mM NaCl, 0.02% sodium azide and 50% glycerol. Store at -20?. Stable for 12 months from date of receipt
<b>Concentration:</b>	lot specific
<b>Purification:</b>	Affinity-chromatography
<b>Conjugation:</b>	Unconjugated
<b>Storage:</b>	Store at -20°C as received.
<b>Stability:</b>	Stable for 12 months from date of receipt.
<b>Predicted Protein Size:</b>	43 kDa
<b>Gene Name:</b>	T-box 1
<b>Database Link:</b>	<a href="#">NP_542377</a> <a href="#">Entrez Gene 6899 Human</a> <a href="#">O43435</a>
<b>Background:</b>	TBX1 Probable transcriptional regulator involved in developmental processes. Is required for normal development of the pharyngeal arch arteries. 3 isoforms of the human protein are produced by alternative splicing.
<b>Synonyms:</b>	CAFS; CATCH22; CTHM; DGCR; DGS; DORV; TBX1C; TGA; VCF; VCFS
<b>Note:</b>	TBX1 antibody detects endogenous levels of total TBX1
<b>Protein Families:</b>	Transcription Factors



[View online »](#)

## Product images:



Western blot analysis on COLO205 cell lysate using TBX1 Antibody