

Product datasheet for **TA347535**

ANP32C Rabbit Polyclonal Antibody

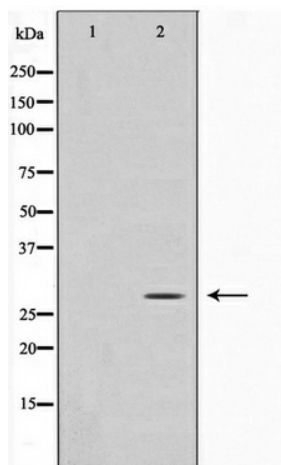
Product data:

Product Type:	Primary Antibodies
Applications:	WB
Recommended Dilution:	WB: 1:500-1:3000
Reactivity:	Human
Host:	Rabbit
Isotype:	IgG
Clonality:	Polyclonal
Immunogen:	The immunogen for anti-ANP32C Antibody: A synthesized peptide derived from human ANP32C
Formulation:	Rabbit IgG in phosphate buffered saline , pH 7.4, 150mM NaCl, 0.02% sodium azide and 50% glycerol. Store at -20?. Stable for 12 months from date of receipt
Concentration:	lot specific
Purification:	Affinity-chromatography
Conjugation:	Unconjugated
Storage:	Store at -20°C as received.
Stability:	Stable for 12 months from date of receipt.
Predicted Protein Size:	26 kDa
Gene Name:	acidic nuclear phosphoprotein 32 family member C
Database Link:	NP_036535 Entrez Gene 23520 Human O43423
Background:	ANP32C Belongs to the ANP32 family.
Synonyms:	PP32R1
Note:	ANP32C antibody detects endogenous levels of total ANP32C



[View online »](#)

Product images:



Western blot analysis on HuvEc cell lysate using ANP32C Antibody