

## Product datasheet for **TA347534S**

### MAP3K13 Rabbit Polyclonal Antibody

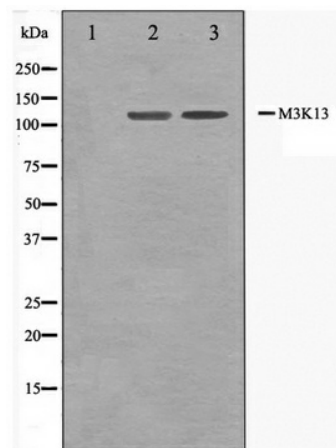
#### Product data:

Product Type:	Primary Antibodies
Applications:	WB
Recommended Dilution:	WB: 1:500-1:3000
Reactivity:	Human, Mouse, Rat
Host:	Rabbit
Isotype:	IgG
Clonality:	Polyclonal
Immunogen:	The immunogen for anti-M3K13 Antibody: A synthesized peptide derived from human M3K13
Formulation:	Rabbit IgG in phosphate buffered saline , pH 7.4, 150mM NaCl, 0.02% sodium azide and 50% glycerol. Store at -20?. Stable for 12 months from date of receipt
Concentration:	lot specific
Purification:	Affinity-chromatography
Conjugation:	Unconjugated
Storage:	Store at -20°C as received.
Stability:	Stable for 12 months from date of receipt.
Predicted Protein Size:	108 kDa
Gene Name:	mitogen-activated protein kinase kinase kinase 13
Database Link:	<a href="#">NP_004712</a> <a href="#">Entrez Gene 71751 MouseEntrez Gene 303823 RatEntrez Gene 9175 Human O43283</a>
Background:	LZK a TKL kinase of the MLK family. Synergizes with antioxidant protein-1 to activate NF-kappaB. Forms a functional signaling complex with JIP-1, a scaffold protein of the c-Jun NH(2)-terminal kinase pathway. This kinase can phosphorylate and activate JNK and MKK7.
Synonyms:	LZK; MEKK13; MLK
Note:	M3K13 antibody detects endogenous levels of total M3K13
Protein Families:	Druggable Genome, Protein Kinase, Transcription Factors
Protein Pathways:	MAPK signaling pathway



[View online »](#)

## Product images:



Western blot analysis on 293 and HepG2 cell lysate using M3K13 Antibody