

## Product datasheet for **TA347533**

### PHF1 Rabbit Polyclonal Antibody

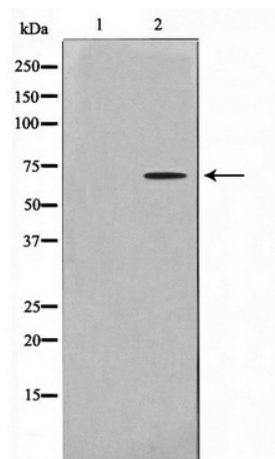
#### Product data:

Product Type:	Primary Antibodies
Applications:	WB
Recommended Dilution:	WB: 1:500-1:3000
Reactivity:	Human, Mouse, Rat
Host:	Rabbit
Isotype:	IgG
Clonality:	Polyclonal
Immunogen:	The immunogen for anti-PHF1 Antibody: A synthesized peptide derived from human PHF1
Formulation:	Rabbit IgG in phosphate buffered saline , pH 7.4, 150mM NaCl, 0.02% sodium azide and 50% glycerol. Store at -20?. Stable for 12 months from date of receipt
Concentration:	lot specific
Purification:	Affinity-chromatography
Conjugation:	Unconjugated
Storage:	Store at -20°C as received.
Stability:	Stable for 12 months from date of receipt.
Predicted Protein Size:	62 kDa
Gene Name:	PHD finger protein 1
Database Link:	<a href="#">NP_077084</a> <a href="#">Entrez Gene 21652 MouseEntrez Gene 294287 RatEntrez Gene 5252 Human O43189</a>
Background:	PHF1 Transcriptional repressor. May promote methylation of histone H3 on 'Lys-27' by the PRC2/EED-EZH2 complex. Interacts with CHMP1. Interacts with the PRC2 complex. 2 isoforms of the human protein are produced by alternative splicing.
Synonyms:	hPHF1; MTF2L2; PCL1; PHF2; TDRD19C
Note:	PHF1 antibody detects endogenous levels of total PHF1
Protein Families:	Druggable Genome, Transcription Factors



[View online »](#)

## Product images:



Western blot analysis on HeLa cell lysate using PHF1 Antibody