

Product datasheet for **TA347532**

CLOCK Rabbit Polyclonal Antibody

Product data:

Product Type:	Primary Antibodies
Applications:	WB
Recommended Dilution:	WB: 1:500-1:3000
Reactivity:	Human, Mouse, Rat
Host:	Rabbit
Isotype:	IgG
Clonality:	Polyclonal
Immunogen:	The immunogen for anti-Clock Antibody: A synthesized peptide derived from human Clock
Formulation:	Rabbit IgG in phosphate buffered saline , pH 7.4, 150mM NaCl, 0.02% sodium azide and 50% glycerol. Store at -20?. Stable for 12 months from date of receipt
Concentration:	lot specific
Purification:	Affinity-chromatography
Conjugation:	Unconjugated
Storage:	Store at -20°C as received.
Stability:	Stable for 12 months from date of receipt.
Predicted Protein Size:	95 kDa
Gene Name:	clock circadian regulator
Database Link:	NP_004889 Entrez Gene 12753 MouseEntrez Gene 60447 RatEntrez Gene 9575 Human Q15516
Background:	CLOCK ARNTL/2-CLOCK heterodimers activate E-box element (3'- CACGTG-5') transcription of a number of proteins of the circadian clock. Activates transcription of PER1 and PER2. This transcription is inhibited in a feedback loop by PER and CRY proteins. Has intrinsic histone acetyltransferase activity and this enzymatic function contributes to chromatin-remodeling events implicated in circadian control of gene expression. Acetylates primarily histones H3 and H4.
Synonyms:	bHLHe8; KAT13D



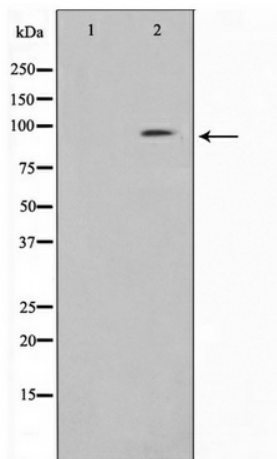
[View online »](#)

Note: Clock antibody detects endogenous levels of total Clock

Protein Families: Druggable Genome, Transcription Factors

Protein Pathways: Circadian rhythm - mammal

Product images:



Western blot analysis on HuvEc cell lysate using Clock Antibody