

## Product datasheet for **TA347531**

### **p73 (TP73) Rabbit Polyclonal Antibody**

#### **Product data:**

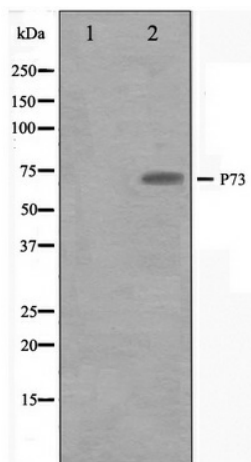
<b>Product Type:</b>	Primary Antibodies
<b>Applications:</b>	WB
<b>Recommended Dilution:</b>	WB: 1:500-1:3000
<b>Reactivity:</b>	Human
<b>Host:</b>	Rabbit
<b>Isotype:</b>	IgG
<b>Clonality:</b>	Polyclonal
<b>Immunogen:</b>	The immunogen for anti-p73 Antibody: A synthesized peptide derived from human p73
<b>Formulation:</b>	Rabbit IgG in phosphate buffered saline , pH 7.4, 150mM NaCl, 0.02% sodium azide and 50% glycerol. Store at -20?. Stable for 12 months from date of receipt
<b>Concentration:</b>	lot specific
<b>Purification:</b>	Affinity-chromatography
<b>Conjugation:</b>	Unconjugated
<b>Storage:</b>	Store at -20°C as received.
<b>Stability:</b>	Stable for 12 months from date of receipt.
<b>Predicted Protein Size:</b>	80 kDa
<b>Gene Name:</b>	tumor protein p73
<b>Database Link:</b>	<a href="#">NP_005418</a> <a href="#">Entrez Gene 7161 Human</a> <a href="#">Q15350</a>
<b>Background:</b>	p73 a protein of the p53 family of proteins. p73, like p53, may have tumor suppressor activity, but its multiple isoforms possess different and sometimes opposing functions. Participates in the apoptotic response to DNA damage. Phosphorylated in a cell cycle-dependent manner and negatively regulated by CDKs.
<b>Synonyms:</b>	P73
<b>Note:</b>	p73 antibody detects endogenous levels of total p73
<b>Protein Families:</b>	Druggable Genome, Transcription Factors



[View online »](#)

Protein Pathways: Neurotrophin signaling pathway, p53 signaling pathway

### Product images:



Western blot analysis on Jurkat cell lysate using p73 Antibody