

## Product datasheet for **TA347527**

### GAK Rabbit Polyclonal Antibody

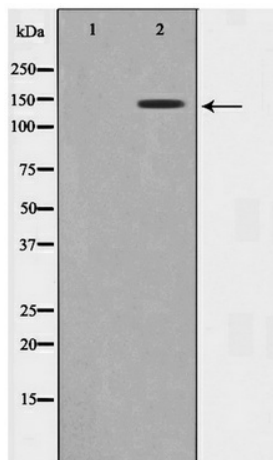
#### Product data:

Product Type:	Primary Antibodies
Applications:	WB
Recommended Dilution:	WB: 1:500-1:3000
Reactivity:	Human, Mouse
Host:	Rabbit
Isotype:	IgG
Clonality:	Polyclonal
Immunogen:	The immunogen for anti-GAK Antibody: A synthesized peptide derived from human GAK
Formulation:	Rabbit IgG in phosphate buffered saline , pH 7.4, 150mM NaCl, 0.02% sodium azide and 50% glycerol. Store at -20?. Stable for 12 months from date of receipt
Concentration:	lot specific
Purification:	Affinity-chromatography
Conjugation:	Unconjugated
Storage:	Store at -20°C as received.
Stability:	Stable for 12 months from date of receipt.
Predicted Protein Size:	144 kDa
Gene Name:	cyclin G associated kinase
Database Link:	<a href="#">NP_005246</a> <a href="#">Entrez Gene 231580 Mouse</a> <a href="#">Entrez Gene 2580 Human</a> <a href="#">Q14976</a>
Background:	GAK Associates with cyclin G and CDK5. Seems to act as an auxilin homolog that is involved in the uncoating of clathrin- coated vesicles by Hsc70 in non-neuronal cells. Expression oscillates slightly during the cell cycle, peaking at G1. Belongs to the protein kinase superfamily.
Synonyms:	DNAJ26; DNAJC26
Note:	GAK antibody detects endogenous levels of total GAK
Protein Families:	Druggable Genome, Protein Kinase



[View online »](#)

## Product images:



Western blot analysis on 293 cell lysate using  
GAK Antibody