

Product datasheet for **TA347526**

HGS Rabbit Polyclonal Antibody

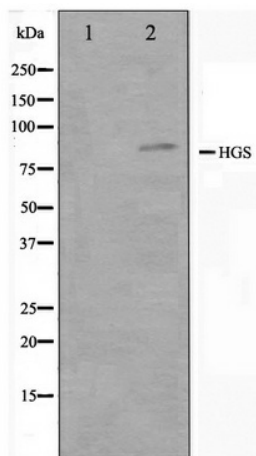
Product data:

Product Type:	Primary Antibodies
Applications:	WB
Recommended Dilution:	WB: 1:500-1:3000
Reactivity:	Human, Mouse, Rat
Host:	Rabbit
Isotype:	IgG
Clonality:	Polyclonal
Immunogen:	The immunogen for anti-HGS Antibody: A synthesized peptide derived from human HGS
Formulation:	Rabbit IgG in phosphate buffered saline , pH 7.4, 150mM NaCl, 0.02% sodium azide and 50% glycerol. Store at -20?. Stable for 12 months from date of receipt
Concentration:	lot specific
Purification:	Affinity-chromatography
Conjugation:	Unconjugated
Storage:	Store at -20°C as received.
Stability:	Stable for 12 months from date of receipt.
Predicted Protein Size:	86 kDa
Gene Name:	hepatocyte growth factor-regulated tyrosine kinase substrate
Database Link:	NP_004703 Entrez Gene 15239 Mouse Entrez Gene 56084 Rat Entrez Gene 9146 Human Q14964
Background:	Hrs a zinc finger protein which is rapidly tyrosine phosphorylated in cells stimulated with various growth factors. Hrs mRNA is expressed in all the human adult and fetal tissues tested.
Synonyms:	HRS
Note:	HGS antibody detects endogenous levels of total HGS
Protein Families:	Druggable Genome
Protein Pathways:	Endocytosis



[View online »](#)

Product images:



Western blot analysis on HepG2 cell lysate using HGS Antibody