

## Product datasheet for **TA347525**

### **FKLF / KLF11 (KLF11) Rabbit Polyclonal Antibody**

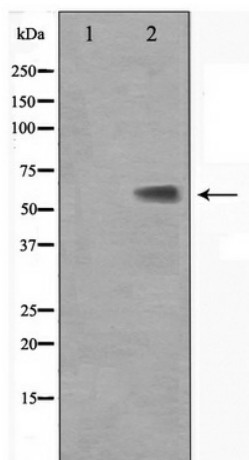
#### **Product data:**

<b>Product Type:</b>	Primary Antibodies
<b>Applications:</b>	WB
<b>Recommended Dilution:</b>	WB: 1:500-1:3000
<b>Reactivity:</b>	Human, Mouse
<b>Host:</b>	Rabbit
<b>Isotype:</b>	IgG
<b>Clonality:</b>	Polyclonal
<b>Immunogen:</b>	The immunogen for anti-KLF11 Antibody: A synthesized peptide derived from human KLF11
<b>Formulation:</b>	Rabbit IgG in phosphate buffered saline , pH 7.4, 150mM NaCl, 0.02% sodium azide and 50% glycerol. Store at -20?. Stable for 12 months from date of receipt
<b>Concentration:</b>	lot specific
<b>Purification:</b>	Affinity-chromatography
<b>Conjugation:</b>	Unconjugated
<b>Storage:</b>	Store at -20°C as received.
<b>Stability:</b>	Stable for 12 months from date of receipt.
<b>Predicted Protein Size:</b>	55 kDa
<b>Gene Name:</b>	Kruppel-like factor 11
<b>Database Link:</b>	<a href="#">NP_003588</a> <a href="#">Entrez Gene 194655 Mouse</a> <a href="#">Entrez Gene 8462 Human</a> <a href="#">Q14901</a>
<b>Background:</b>	TIEG2 Transcription factor. Activates the epsilon- and gamma- globin gene promoters and, to a much lower degree, the beta-globin gene and represses promoters containing SP1-like binding inhibiting cell growth. Represses transcription of SMAD7 which enhances TGF-beta signaling.
<b>Synonyms:</b>	FKLF; FKLF1; MODY7; TIEG2; Tieg3
<b>Note:</b>	KLF11 antibody detects endogenous levels of total KLF11
<b>Protein Families:</b>	Transcription Factors



[View online »](#)

## Product images:



Western blot analysis on Jurkat cell lysate using  
KLF11 Antibody