

## Product datasheet for **TA347524**

### **BCKDH kinase (BCKDK) Rabbit Polyclonal Antibody**

#### **Product data:**

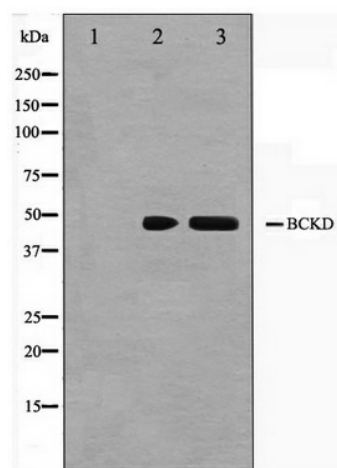
<b>Product Type:</b>	Primary Antibodies
<b>Applications:</b>	WB
<b>Recommended Dilution:</b>	WB: 1:500-1:3000
<b>Reactivity:</b>	Human, Mouse, Rat
<b>Host:</b>	Rabbit
<b>Isotype:</b>	IgG
<b>Clonality:</b>	Polyclonal
<b>Immunogen:</b>	The immunogen for anti-BCKD Antibody: A synthesized peptide derived from human BCKD
<b>Formulation:</b>	Rabbit IgG in phosphate buffered saline , pH 7.4, 150mM NaCl, 0.02% sodium azide and 50% glycerol. Store at -20?. Stable for 12 months from date of receipt
<b>Concentration:</b>	lot specific
<b>Purification:</b>	Affinity-chromatography
<b>Conjugation:</b>	Unconjugated
<b>Storage:</b>	Store at -20°C as received.
<b>Stability:</b>	Stable for 12 months from date of receipt.
<b>Predicted Protein Size:</b>	46 kDa
<b>Gene Name:</b>	branched chain ketoacid dehydrogenase kinase
<b>Database Link:</b>	<a href="#">NP_005872</a> <a href="#">Entrez Gene 12041 MouseEntrez Gene 29603 RatEntrez Gene 10295 Human Q14874</a>
<b>Background:</b>	BCKDK an atypical protein kinase associated with the mitochondrial matrix. Contains a HATPase_c domain, found in several ATP-binding proteins including protein histidine kinases (PHKs), PHDKs, DNA gyrase B, topoisomerases, heat shock proteins, and DNA mismatch repair proteins. Unlike PHKs, BCK dimerizes through direct interaction of two opposing nucleotide-binding domains.
<b>Synonyms:</b>	BCKDKD; BDK
<b>Note:</b>	BCKD antibody detects endogenous levels of total BCKD



[View online »](#)

Protein Families: Druggable Genome, Protein Kinase

### Product images:



Western blot analysis on Jurkat and K562 cell lysate using BCKD Antibody