

## Product datasheet for TA347522

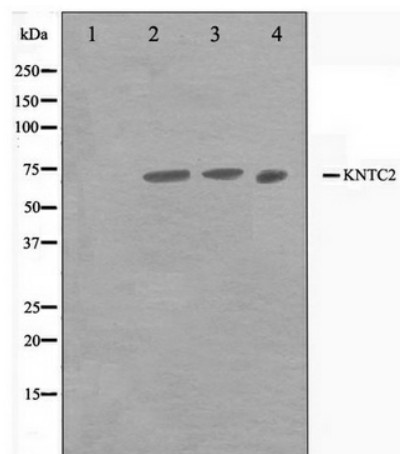
### HEC1 (NDC80) Rabbit Polyclonal Antibody

#### Product data:

Product Type:	Primary Antibodies
Applications:	WB
Recommended Dilution:	WB: 1:500-1:3000
Reactivity:	Human, Mouse
Host:	Rabbit
Isotype:	IgG
Clonality:	Polyclonal
Immunogen:	The immunogen for anti-HEC1 Antibody: A synthesized peptide derived from human HEC1
Formulation:	Rabbit IgG in phosphate buffered saline , pH 7.4, 150mM NaCl, 0.02% sodium azide and 50% glycerol. Store at -20?. Stable for 12 months from date of receipt
Concentration:	lot specific
Purification:	Affinity-chromatography
Conjugation:	Unconjugated
Storage:	Store at -20°C as received.
Stability:	Stable for 12 months from date of receipt.
Predicted Protein Size:	73 kDa
Gene Name:	NDC80, kinetochore complex component
Database Link:	<a href="#">NP_006092</a> <a href="#">Entrez Gene 67052 Mouse</a> <a href="#">Entrez Gene 10403 Human</a> <a href="#">Q14777</a>
Background:	HEC1 plays an essential role in chromosome segregation by interacting through its coiled-coil domains with several proteins that modulate the G2/M phase. Phosphorylation by Nek2 is essential for faithful chromosome segregation. Required for the recruitment of Mps1 kinase and Mad1/Mad2 complexes to kinetochores.
Synonyms:	HEC; HEC1; HsHec1; hsNDC80; KNTC2; TID3
Note:	HEC1 antibody detects endogenous levels of total HEC1
Protein Families:	Druggable Genome


[View online »](#)

## Product images:



Western blot analysis on Jurkat, A549 and HuvEc cell lysate using HEC1 Antibody