

Product datasheet for **TA347521**

OVOL1 Rabbit Polyclonal Antibody

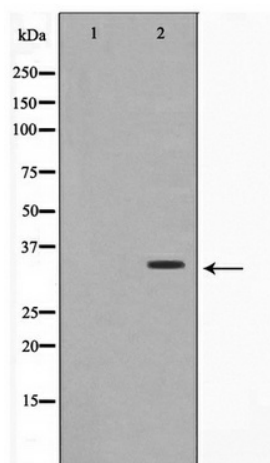
Product data:

Product Type:	Primary Antibodies
Applications:	WB
Recommended Dilution:	WB: 1:500-1:3000
Reactivity:	Human, Mouse
Host:	Rabbit
Isotype:	IgG
Clonality:	Polyclonal
Immunogen:	The immunogen for anti-OVOL1 Antibody: A synthesized peptide derived from human OVOL1
Formulation:	Rabbit IgG in phosphate buffered saline , pH 7.4, 150mM NaCl, 0.02% sodium azide and 50% glycerol. Store at -20?. Stable for 12 months from date of receipt
Concentration:	lot specific
Purification:	Affinity-chromatography
Conjugation:	Unconjugated
Storage:	Store at -20°C as received.
Stability:	Stable for 12 months from date of receipt.
Predicted Protein Size:	33 kDa
Gene Name:	ovo like transcriptional repressor 1
Database Link:	NP_004552 Entrez Gene 18426 Mouse Entrez Gene 5017 Human Q14753
Background:	OVOL1 Putative transcription factor. Involved in hair formation and spermatogenesis. May function in the differentiation and/or maintenance of the urogenital system.
Synonyms:	HOVO1
Note:	OVOL1 antibody detects endogenous levels of total OVOL1
Protein Families:	Druggable Genome, Transcription Factors



[View online »](#)

Product images:



Western blot analysis on A549 cell lysate using
OVOL1 Antibody