

Product datasheet for **TA347520**

TP53I11 Rabbit Polyclonal Antibody

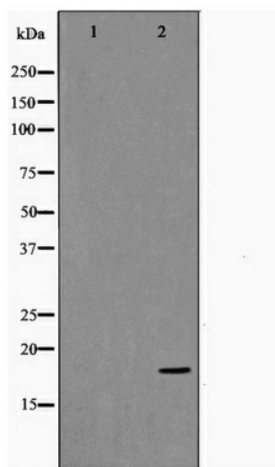
Product data:

Product Type:	Primary Antibodies
Applications:	WB
Recommended Dilution:	WB: 1:500-1:3000
Reactivity:	Human
Host:	Rabbit
Isotype:	IgG
Clonality:	Polyclonal
Immunogen:	The immunogen for anti-TP53I11 Antibody: A synthesized peptide derived from human TP53I11
Formulation:	Rabbit IgG in phosphate buffered saline , pH 7.4, 150mM NaCl, 0.02% sodium azide and 50% glycerol. Store at -20?. Stable for 12 months from date of receipt
Concentration:	lot specific
Purification:	Affinity-chromatography
Conjugation:	Unconjugated
Storage:	Store at -20°C as received.
Stability:	Stable for 12 months from date of receipt.
Predicted Protein Size:	18 kDa
Gene Name:	tumor protein p53 inducible protein 11
Database Link:	NP_006025 Entrez Gene 9537 Human O14683
Background:	TP53I11 Induced by TP53/p53.
Synonyms:	PIG11
Note:	TP53I11 antibody detects endogenous levels of total TP53I11
Protein Families:	Druggable Genome, Transmembrane



[View online »](#)

Product images:



Western blot analysis on HuvEc cell lysate using TP53I11 Antibody