

## Product datasheet for **TA347518**

### DLGAP1 Rabbit Polyclonal Antibody

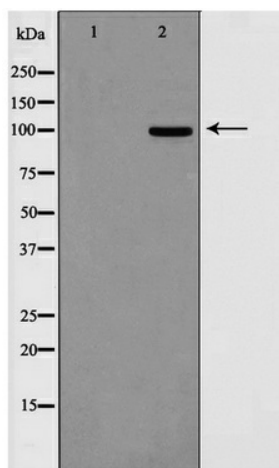
#### Product data:

Product Type:	Primary Antibodies
Applications:	WB
Recommended Dilution:	WB: 1:500-1:3000
Reactivity:	Human, Mouse, Rat
Host:	Rabbit
Isotype:	IgG
Clonality:	Polyclonal
Immunogen:	The immunogen for anti-DLGAP1 Antibody: A synthesized peptide derived from human DLGAP1
Formulation:	Rabbit IgG in phosphate buffered saline , pH 7.4, 150mM NaCl, 0.02% sodium azide and 50% glycerol. Store at -20?. Stable for 12 months from date of receipt
Concentration:	lot specific
Purification:	Affinity-chromatography
Conjugation:	Unconjugated
Storage:	Store at -20°C as received.
Stability:	Stable for 12 months from date of receipt.
Predicted Protein Size:	108 kDa
Gene Name:	DLG associated protein 1
Database Link:	<a href="#">NP_001003809</a> <a href="#">Entrez Gene 65040 Rat</a> <a href="#">Entrez Gene 224997 Mouse</a> <a href="#">Entrez Gene 9229 Human</a> <a href="#">Q14490</a>
Background:	SAPAP1 Part of the postsynaptic scaffold in neuronal cells. Belongs to the SAPAP family. Interacts with guanylate kinase-like domain of DLG1, DLG2, DLG3, DLG4 and AIP1. Interacts with the PDZ domain of SHANK1, SHANK2 and SHANK3. Found in a complex with DLG4 and SHANK1, SHANK2 or SHANK3. Found in a complex with DLG4 and BEGAIN.
Synonyms:	DAP-1; DAP-1-ALPHA; DAP-1-BETA; DAP1; DLGAP1A; DLGAP1B; GKAP; hGKAP; SAPAP1
Note:	DLGAP1 antibody detects endogenous levels of total DLGAP1



[View online »](#)

## Product images:



Western blot analysis on HepG2 cell lysate using DLGAP1 Antibody