

Product datasheet for **TA347517**

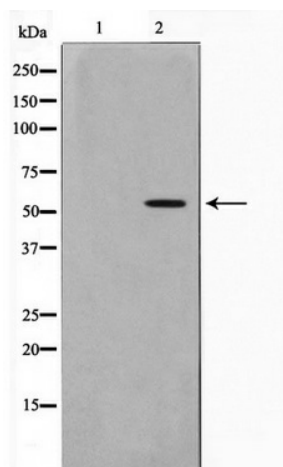
TRIM38 Rabbit Polyclonal Antibody

Product data:

Product Type:	Primary Antibodies
Applications:	WB
Recommended Dilution:	WB: 1:500-1:3000
Reactivity:	Human, Mouse
Host:	Rabbit
Isotype:	IgG
Clonality:	Polyclonal
Immunogen:	The immunogen for anti-TRIM38 Antibody: A synthesized peptide derived from human TRIM38
Formulation:	Rabbit IgG in phosphate buffered saline , pH 7.4, 150mM NaCl, 0.02% sodium azide and 50% glycerol. Store at -20?. Stable for 12 months from date of receipt
Concentration:	lot specific
Purification:	Affinity-chromatography
Conjugation:	Unconjugated
Storage:	Store at -20°C as received.
Stability:	Stable for 12 months from date of receipt.
Predicted Protein Size:	53 kDa
Gene Name:	tripartite motif containing 38
Database Link:	NP_006346 Entrez Gene 214158 Mouse Entrez Gene 10475 Human O00635
Background:	The protein encoded by this gene is a member of the tripartite motif (TRIM) family. The TRIM motif includes three zinc-binding domains, a RING, a B-box type 1 and a B-box type 2, and a coiled-coil region. The function of this protein has not been identified.
Synonyms:	RNF15; RORET
Note:	TRIM38 antibody detects endogenous levels of total TRIM38
Protein Families:	Druggable Genome



[View online »](#)

Product images:


Western blot analysis on LOVO cell lysate using TRIM38 Antibody