

Product datasheet for **TA347516**

Breast cancer suppressor candidate 1 (VWA5A) Rabbit Polyclonal Antibody

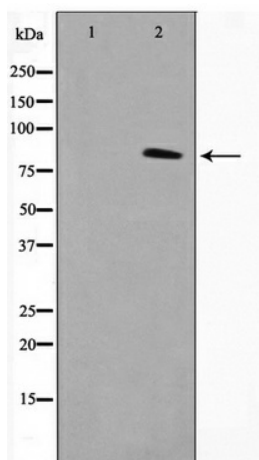
Product data:

Product Type:	Primary Antibodies
Applications:	WB
Recommended Dilution:	WB: 1:500-1:3000
Reactivity:	Human
Host:	Rabbit
Isotype:	IgG
Clonality:	Polyclonal
Immunogen:	The immunogen for anti-VWA5A Antibody: A synthesized peptide derived from human VWA5A
Formulation:	Rabbit IgG in phosphate buffered saline , pH 7.4, 150mM NaCl, 0.02% sodium azide and 50% glycerol. Store at -20?. Stable for 12 months from date of receipt
Concentration:	lot specific
Purification:	Affinity-chromatography
Conjugation:	Unconjugated
Storage:	Store at -20°C as received.
Stability:	Stable for 12 months from date of receipt.
Predicted Protein Size:	86 kDa
Gene Name:	von Willebrand factor A domain containing 5A
Database Link:	NP_001123614 Entrez Gene 4013 Human O00534
Background:	VWA5A May play a role in tumorigenesis as a tumor suppressor. Altered expression of this protein and disruption of the molecular pathway it is involved in, may contribute directly to or modify tumorigenesis. 4 isoforms of the human protein are produced by alternative splicing.
Synonyms:	BCSC-1; BCSC1; LOH11CR2A
Note:	VWA5A antibody detects endogenous levels of total VWA5A



[View online »](#)

Product images:



Western blot analysis on 293 cell lysate using VWA5A Antibody