

Product datasheet for **TA347513**

PDLIM1 Rabbit Polyclonal Antibody

Product data:

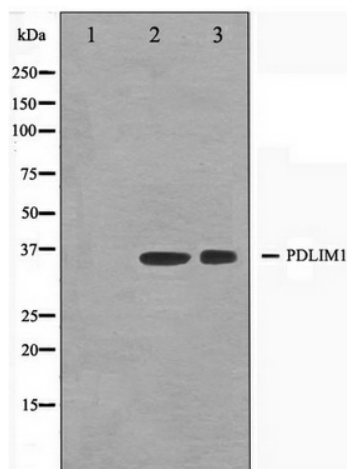
Product Type:	Primary Antibodies
Applications:	WB
Recommended Dilution:	WB: 1:500-1:3000
Reactivity:	Human, Mouse, Rat
Host:	Rabbit
Isotype:	IgG
Clonality:	Polyclonal
Immunogen:	The immunogen for anti-CLIM1 Antibody: A synthesized peptide derived from human CLIM1
Formulation:	Rabbit IgG in phosphate buffered saline , pH 7.4, 150mM NaCl, 0.02% sodium azide and 50% glycerol. Store at -20?. Stable for 12 months from date of receipt
Concentration:	lot specific
Purification:	Affinity-chromatography
Conjugation:	Unconjugated
Storage:	Store at -20°C as received.
Stability:	Stable for 12 months from date of receipt.
Predicted Protein Size:	36 kDa
Gene Name:	PDZ and LIM domain 1
Database Link:	NP_066272 Entrez Gene 54132 Mouse Entrez Gene 54133 Rat Entrez Gene 9124 Human O00151
Background:	CLIM1 a cytoskeletal adaptor protein that bring other proteins to the cytoskeleton. Interacts with alpha-actinins 1, 2 and 4. Recruits the Clik1 kinase to actin stress fibers in nonmuscle cells. Strongly expressed in the heart and skeletal muscle, moderately expressed in the spleen, small intestine, colon, placenta, and lung. A lower level expression is seen in liver, thymus, kidney, prostate and pancreas and is not found in the brain, testis, ovary, and peripheral blood leukocytes.
Synonyms:	CLIM1; CLP-36; CLP36; hCLIM1; HEL-S-112



[View online »](#)

Note: CLIM1 antibody detects endogenous levels of total CLIM1

Product images:



Western blot analysis on K562 and Jurkat cell lysate using CLIM1 Antibody