

## Product datasheet for **TA347511**

### **Ku70 (XRCC6) Rabbit Polyclonal Antibody**

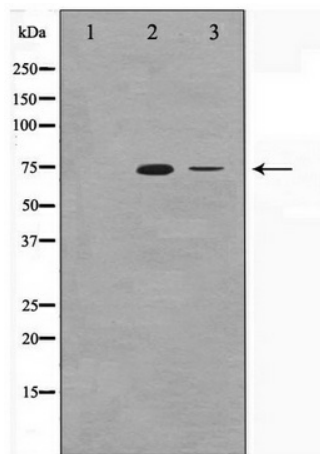
#### **Product data:**

<b>Product Type:</b>	Primary Antibodies
<b>Applications:</b>	WB
<b>Recommended Dilution:</b>	WB: 1:500-1:3000
<b>Reactivity:</b>	Human, Mouse
<b>Host:</b>	Rabbit
<b>Isotype:</b>	IgG
<b>Clonality:</b>	Polyclonal
<b>Immunogen:</b>	The immunogen for anti-Ku70 Antibody: A synthesized peptide derived from human Ku70
<b>Formulation:</b>	Rabbit IgG in phosphate buffered saline , pH 7.4, 150mM NaCl, 0.02% sodium azide and 50% glycerol. Store at -20?. Stable for 12 months from date of receipt
<b>Concentration:</b>	lot specific
<b>Purification:</b>	Affinity-chromatography
<b>Conjugation:</b>	Unconjugated
<b>Storage:</b>	Store at -20°C as received.
<b>Stability:</b>	Stable for 12 months from date of receipt.
<b>Predicted Protein Size:</b>	70 kDa
<b>Gene Name:</b>	X-ray repair complementing defective repair in Chinese hamster cells 6
<b>Database Link:</b>	<a href="#">NP_001460</a> <a href="#">Entrez Gene 14375 Mouse</a> <a href="#">Entrez Gene 2547 Human</a> <a href="#">P12956</a>
<b>Background:</b>	Ku70 a mini-chromosome maintenance protein, essential for the initiation of eukaryotic genome replication. Allows DNA to undergo a single round of replication per cell cycle. Required for the entry in S phase and for cell division.
<b>Synonyms:</b>	CTC75; CTCBF; G22P1; KU70; ML8; TLAA
<b>Note:</b>	Ku70 antibody detects endogenous levels of total Ku70
<b>Protein Families:</b>	Druggable Genome, Transcription Factors
<b>Protein Pathways:</b>	Non-homologous end-joining



[View online »](#)

## Product images:



Western blot analysis on HeLa and HepG2 cell lysate using Ku70 Antibody